

# Model 4525-3800 Radiation Portal Monitor

*Radiation Detection for a Safer World*



Ludlum Measurements, Inc.

## Introduction

The Ludlum 4525-Series of Radiation Portal Monitor (RPMs) represents state-of-the-art technology for detecting very low levels of radiation in vehicles. The ruggedized detectors offer the greatest detection volume, delivering the best sensitivity at the most affordable price. All detector data are connected to a central computer running Ludlum's Echo software, which performs all alerting, data logging, and reporting functions. This system can be networked with up to 10 PC stations.

Key features this system offers include very low false positives, 100 millisecond samples, vehicle counter, rail mode, real-time data logging, bi-directional entry, user-friendly operation, remote HV adjust, battery backup and superior service and support.



Part Number: 48-3863

*(Shown with optional detector stands)*



## SYSTEM COMPUTER SPECIFICATIONS

- USB Keyboard with Touchpad
- Inkjet Printer
- Monitor 43.2 cm (17 inch) Black
- Computer: Fanless Industrial
- UPS (Uninterruptable Power Supply)
- Intel® Atom Processor
- 2 GB RAM
- 80 GB Hard Drive Integrated SSD
- Microsoft Windows® 7 Professional OS
- Integrated Intel® Video
- Integrated Intel® PRO Network
- Integrated Realtek Sound
- Wall Mount Bracket
- Weight: 18.1 kg (40 lb)
- Dimensions: 97.3 x 55.9 x 47.5 cm (39.8 x 22 x 18.7 in.) (H x W x D)



## Specifications

### DETECTORS

- 2 Weather Protected Plastic Scintillator Detectors
- 31.5 liters (1920 in<sup>3</sup>) Volume per Detector
- Reliable Operation with Few False Positives
- Real-Time Central Data Logging & Reporting
- Bi-directional Entry
- Rail Car Mode
- Optional Camera Image Capturing and dB Storage
- 8-Hour Battery Backup
- User-Friendly Operation

### ALARM TYPES

1. Radiation
2. Overspeed
3. Sensor failure
4. Instrument failure
5. Low battery

### INCLUDED ACCESSORIES

- Remote Annunciator Panel (Model L-4511-207)
- Remote Light Indicators with Reset Button and 30.5 m (100 ft) Cable
- 76.2 m (250 ft) CAT 5e cable
- Dual Presence/Speed Sensors

### OPTIONAL ACCESSORIES

- Strobe/Horn Assembly
- External Video Camera in Weatherproof Enclosure (each system can support one camera per lane) Detector Stand Set
- Point-to-point wireless network

# Model 4525-7000 Vehicle Gateway Monitor

*Radiation Detection for a Safer World*



Ludlum Measurements, Inc.

## Introduction

The Ludlum 4525-Series of Radiation Gate Monitors represents state-of-the-art technology for detecting very low levels of radiation in vehicles. The ruggedized detectors offer the greatest detection volume, delivering the best sensitivity at the most affordable price. All detector data are connected to a central computer running Ludlum's Echo software, which performs all alerting, data logging, and reporting functions. This system can be networked with up to 10 PC stations.

Key features this system offers include very low false positives, 100 millisecond samples, vehicle counter, rail mode, real-time data logging, bi-directional entry, user-friendly operation, remote HV adjust, battery backup and superior service and support.



Part Number: 48-3605  
(Shown with optional detector stands)



## Specifications

### DETECTORS

- 2 Weather Protected Plastic Scintillator Detectors
- 3500 in<sup>3</sup> Volume per Detector
- Reliable Operation with Few False Positives
- Real-Time Central Data Logging & Reporting
- Bi-directional Entry
- Rail Car Mode
- Optional Camera Image Capturing and dB Storage
- 8-Hour Battery Backup
- User-Friendly Operation

### ALARM TYPES

1. Radiation
2. Overspeed
3. Sensor failure
4. Instrument failure
5. Low battery

### INCLUDED ACCESSORIES

- Remote Annunciator Panel (Model L-4511-207)
- Remote Light Indicators with Reset Button & 30.5 m (100 ft) Cable
- 76.2 m (250 ft) CAT 5e cable
- Dual Presence/Speed Sensors

### OPTIONAL ACCESSORIES

- Strobe/Horn Assembly
- External Video Camera in Weatherproof Enclosure  
(each system can support one camera per lane)
- Detector Stand Set
- Point-to-point wireless network

## SYSTEM COMPUTER SPECIFICATIONS

- x86 Processor
- Windows 7 Professional™ operating system
- 2 GB RAM
- 64 GB SSD
- LCD, 43.2 cm (17 in.) monitor
- Mini USB keyboard with built in touchpad
- Supports up to 4 lanes with 8 detectors per lane
- Data logging with automatic daily back-up
- Ethernet network capability
- Uninterruptible power supply
- Inkjet printer
- 8 relay outputs for options
- Radiation profile
- Weight: 18.1 kg (40 lb)
- Dimensions: 97.3 x 55.9 x 47.5 cm  
(39.8 x 22 x 18.7 in.) (H x W x D)



# Model 4525-7000-2 Radiation Portal Monitor

*Radiation Detection for a Safer World*



Ludlum Measurements, Inc.

## Introduction

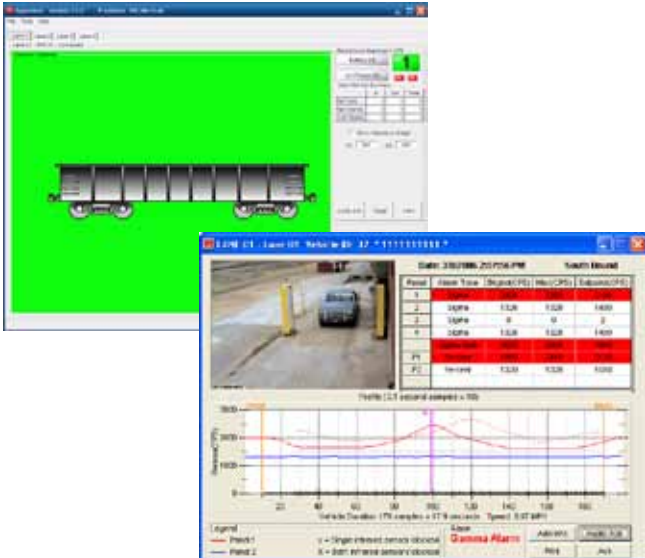
The Ludlum 4525-Series of Radiation Portal Monitors (RPMs) represents state-of-the-art technology for detecting very low levels of radiation in vehicles. The ruggedized detectors offer the greatest detection volume, delivering the best sensitivity at the most affordable price. All detector data are connected to a central computer running Ludlum's Echo software, which performs all alerting, data logging, and reporting functions. This system can be networked with up to 10 PC stations.

Each gamma detector has been configured to have better resolution than a typical plastic scintillator detector. Additionally, the electronics features low energy and high energy discrimination which allows the system to not alarm on common NORM.

Key features this system offers include very low false positives, 100 millisecond samples, vehicle counter, rail mode, real-time data logging, bi-directional entry, user-friendly operation, remote HV adjust, battery backup and superior service and support.



Part Number: 48-3973  
(Shown with optional detector stands)



## Specifications

### DETECTORS

- 2 Weather Protected Plastic Scintillator Detectors
- Two 5.1 cm (2 in.) PMTs per Detector
- Reliable Operation with Few False Positives
- Real-Time Central Data Logging & Reporting
- Bi-directional Entry
- Rail Car Mode
- Optional Camera Image Capturing and dB Storage
- 8-Hour Battery Backup
- User-Friendly Operation

### ALARM TYPES

- Radiation
- Overspeed
- Sensor failure
- Instrument failure
- Low battery
- NORM discrimination

### INCLUDED ACCESSORIES

- Remote Annunciator Panel (Model L-4511-207)
- Remote Light Indicators with Reset Button & 30.5 m (100 ft) Cable
- 76.2 m (250 ft) CAT 5e cable
- Dual Presence/Speed Sensors

### OPTIONAL ACCESSORIES

- Strobe/Horn Assembly
- External Video Camera in Weatherproof Enclosure (each system can support one camera per lane)
- Detector Stand Set
- Point-to-point wireless network

## SYSTEM COMPUTER SPECIFICATIONS

- USB Keyboard with Touchpad
- Inkjet Printer
- Monitor 43.2 cm (17 inch) Black
- Computer: Fanless Industrial
- UPS (Uninterruptable Power Supply)
- Intel® Atom Processor
- 2 GB RAM
- 80 GB Hard Drive Integrated SSD
- Microsoft Windows® 7 Professional OS
- Integrated Intel® Video
- Integrated Intel® PRO Network
- Integrated Realtek Sound
- Wall Mount Bracket
- Weight: 18.1 kg (40 lb)
- Dimensions: 97.3 x 55.9 x 47.5 cm (39.8 x 22 x 18.7 in.) (H x W x D)

