

Bericht zum spitalbasierten COVID-19-Sentinel- Überwachungssystem

Datenstand: 27. September 2022

1. Einleitende Zusammenfassung

Das spitalbasierte COVID-19-Sentinel-Überwachungssystem (CH-SUR) wurde im Jahr 2018 gegründet, um grippebedingte Hospitalisationen zu erfassen. Bereits am 1. März 2020, vier Tage nach der Meldung des ersten bestätigten COVID-19 Falls in der Schweiz, stand das angepasste Programm bereit, um auch Hospitalisationen im Zusammenhang mit einer laborbestätigten SARS-CoV-2-Infektion zu registrieren.

Zurzeit nehmen 20 Spitäler aktiv teil, darunter die meisten Kantons- und Universitätsspitäler, welche einen grossen Teil der hospitalisierten pädiatrischen und erwachsenen Patientinnen und Patienten in der ganzen Schweiz abdecken. Die CH-SUR-Statistik gibt unter anderem die Anzahl und Dauer der **Hospitalisationen** sowie die Aufenthalte auf der Intensivpflegestation an. Eine Patientin oder ein Patient kann während einer Hospitalisationsepisode mehrfach hospitalisiert werden bzw. mehrere Aufnahmen in eine Intensivpflegestation (**IPS**) benötigen. Ersichtlich ist in CH-SUR ebenfalls, ob die Patientin oder der Patient während der Hospitalisation **an oder mit COVID-19** verstorben ist.

Einschlusskriterien: CH-SUR erfasst Daten von Patientinnen und Patienten, welche mit einer dokumentierten Infektion mit SARS-CoV-2 hospitalisiert wurden und deren Spitalaufenthalt länger als 24 Stunden andauert. **Nosokomiale** SARS-CoV-2-Infektionen werden in der Datenbank ebenfalls erfasst und in einem separaten Kapitel am Schluss dieses Berichts aufgeführt. Als Bestätigung für eine Infektion gilt ein positiver PCR-Test (Polymerase Chain Reaction) oder ein positiver Antigen-Schnelltest, wie auch ein klinischer Befund für COVID-19.

Seit Beginn der Epidemie bis zum 26. September 2022 wurden Daten von 38 113 **Hospitalisationsepisoden** erhoben. Im gleichen Zeitraum wurden dem BAG im Rahmen der Meldepflicht für die gesamte Schweiz 58 114 Episoden von Hospitalisationen mit einer laborbestätigten SARS-CoV-2-Infektion gemeldet. Das CH-SUR-System deckte somit ca. 65,6% aller gemeldeten Hospitalisationen im Zusammenhang mit SARS-CoV-2 in der Schweiz ab.

Seit März 2022 konzentriert sich dieser Bericht auf Episoden, bei welchen die Infektion ausserhalb des Spitals stattgefunden hat (**ambulant erworbene** Infektionen, beschrieben in Kapitel 2 bis 6). Ein separates Kapitel befasst sich mit den **nosokomialen** Infektionen (Kapitel 7). Der Gesamtanteil der nosokomialen Infektionen unter allen dokumentierten Episoden lag bei 14,8% (5 655 von 38 113), während der Anteil der Episoden im Zusammenhang mit ambulant erworbenen Infektionen 82,6% (31 464 von 38 113) betrug (Abbildung 1). 2,6% der Episoden konnten weder den nosokomialen noch den ambulant erworbenen Infektionen zugeordnet werden.

Von allen Episoden im Zusammenhang mit einer ambulant erworbenen Infektion, für welche vollständige relevante Daten vorliegen, erforderten 13,9% einen Aufenthalt in einer IPS (4 259 von 30 550 Episoden, 26. Februar 2020 bis Juli 31, 2022) und 8,9% führten zum Tod an COVID-19 (2 604 von 29 118 Episoden, 26. Februar 2020 bis September 26, 2022).

Während des letzten Zeitraums, für den genügend Daten vorliegen (Jun 01, 2022 bis Jul 31, 2022), wurden 1 988 Episoden im Zusammenhang mit ambulant erworbenen Infektionen verzeichnet. Davon betrafen 396 (19,9%) nicht immunisierte Patientinnen und Patienten und 769 (38,7%) **vollständig immunisierte** Patientinnen und Patienten

(Abbildung 2). Im gleichen Zeitraum waren 128 Episoden mit einem Aufenthalt auf einer Intensivpflegestation verbunden. Von diesen betrafen 23 (18,0%) nicht immunisierte und 50 (39,1%) vollständig immunisierte Patientinnen und Patienten. In 47 Episoden starben die Patientinnen und Patienten an COVID-19 (2,4% aller registrierten Episoden mit bekanntem Outcome), wobei 15 Todesfälle nicht immunisierte Patientinnen und Patienten und 13 vollständig immunisierte Patientinnen und Patienten betrafen.

Am 1. April 2022 kehrte die Schweiz in die normale Lage zurück. Seither besteht die Teststrategie in den Spitälern darin, nur noch Patienten mit Symptomen, welche mit einer SARS-CoV-2-Infektion vereinbar sind, zu testen. Diese Änderung der Teststrategie kann zu einer Verringerung der Zahl der registrierten Fälle führen, da nur noch Patienten mit typischen COVID-19-Symptomen identifiziert werden. Definitionen und weitere Informationen zu den Daten finden Sie im Kapitel **Glossar und ergänzende Informationen** am Schluss dieses Berichts.

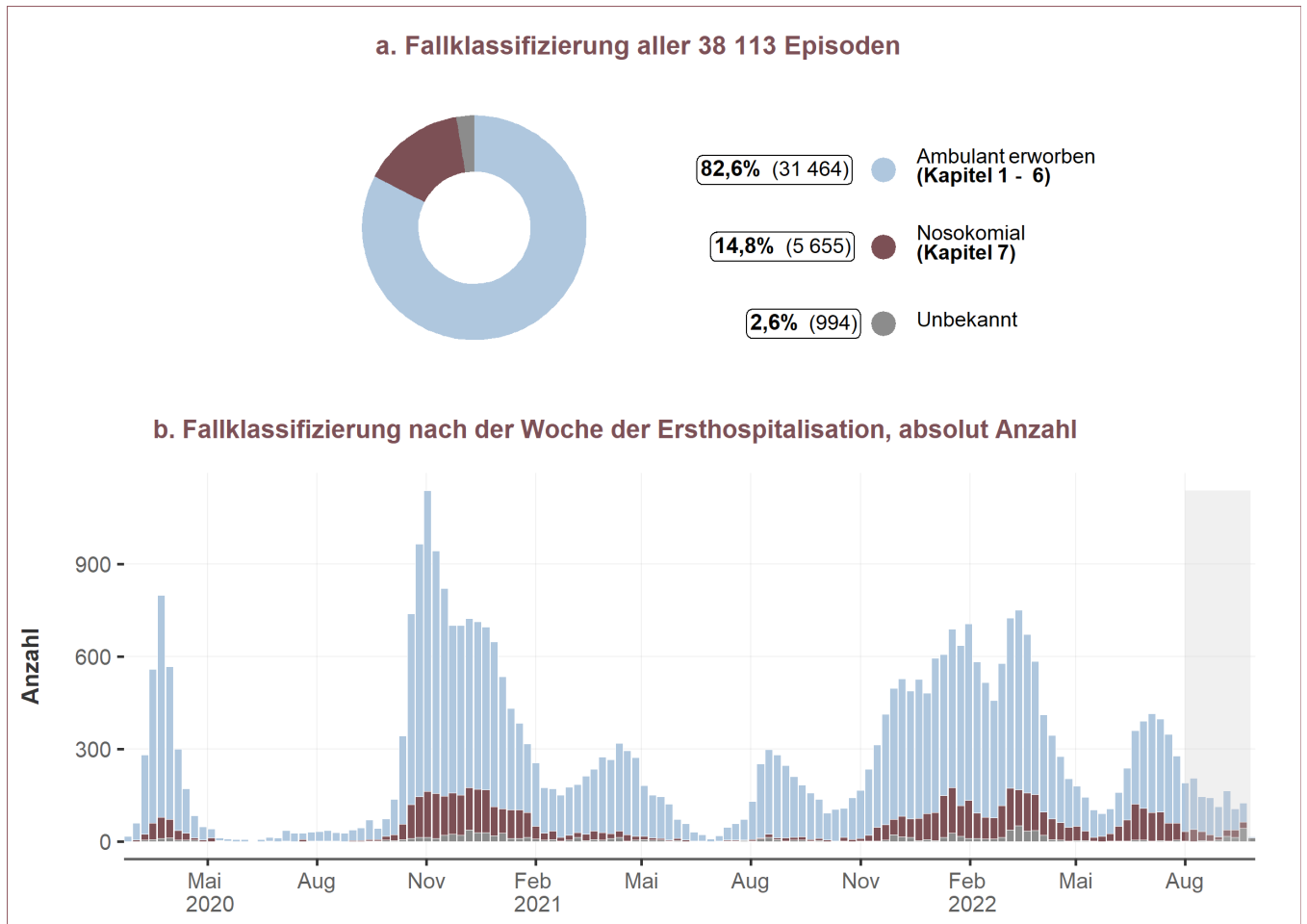


Abbildung 1: Episoden nach Fallklassifizierung (Infektionsquelle). Anteil (normalisiert in %) der Episoden nach Infektionsquelle (Diagramm a) und absolute Anzahl Episoden über die Zeit (Diagramm b). Bei Episoden mit Mehrfachhospitalisation wurde die Fallklassifizierung der Ersthospitalisation berücksichtigt. Aufgrund von Verzögerungen bei der Datenerfassung werden die Daten der letzten beiden Monate (grau markiert) als provisorisch betrachtet.

Übersicht über CH-SUR Hospitalisierte, in den IPS behandelte Episoden und Todesfälle vom 01. Juni 2022 bis 31. Juli 2022

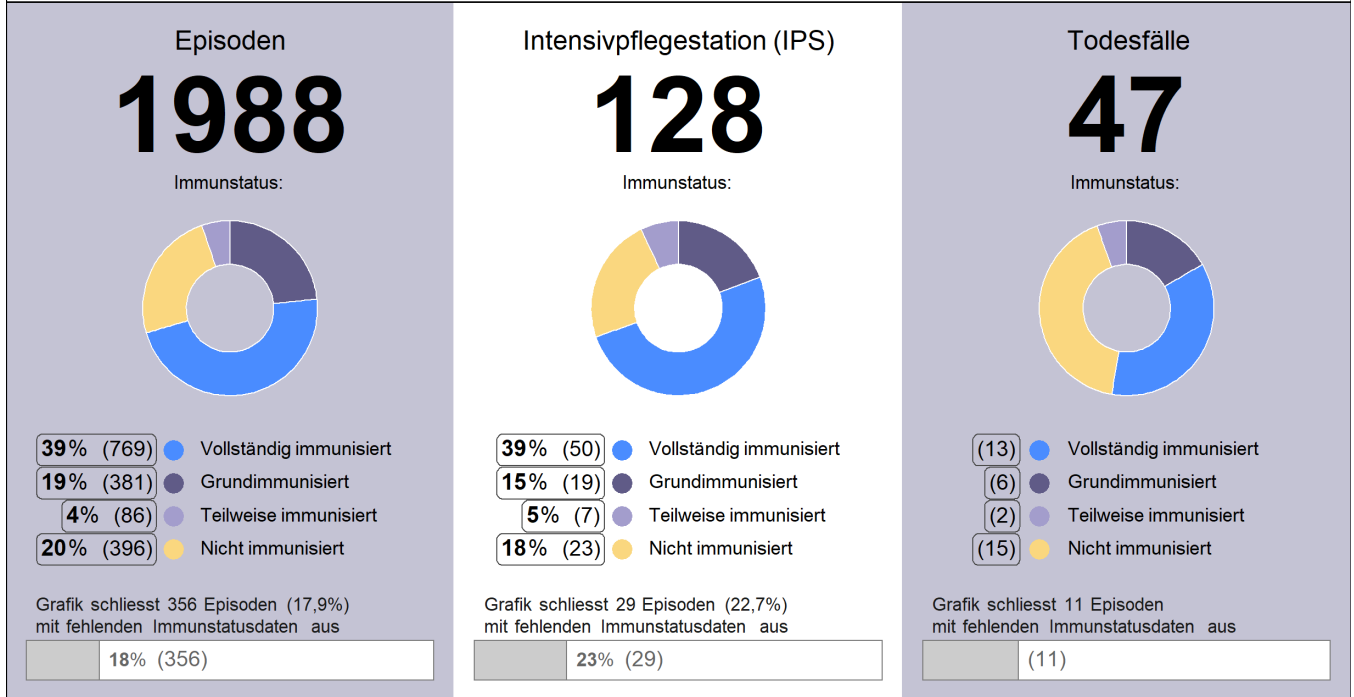


Abbildung 2: Übersicht über die neuesten Daten. Die Daten der letzten beiden Monate werden aufgrund von Verzögerungen bei der Dateneingabe als vorläufig betrachtet und wurden daher nicht berücksichtigt.

2. Hospitalizations and demographic characteristics

Between the start of the epidemic in Switzerland and September 26, 2022 and among the 19 hospitals actively participating in CH-SUR, 31,464 episodes were registered, accounting for a total of 32,642 hospitalizations. There were more hospitalizations than episodes because some episodes include multiple hospitalizations (for more details see section [glossary and supplemental information](#)). An overview of these rehospitalizations is shown in Figure 3.

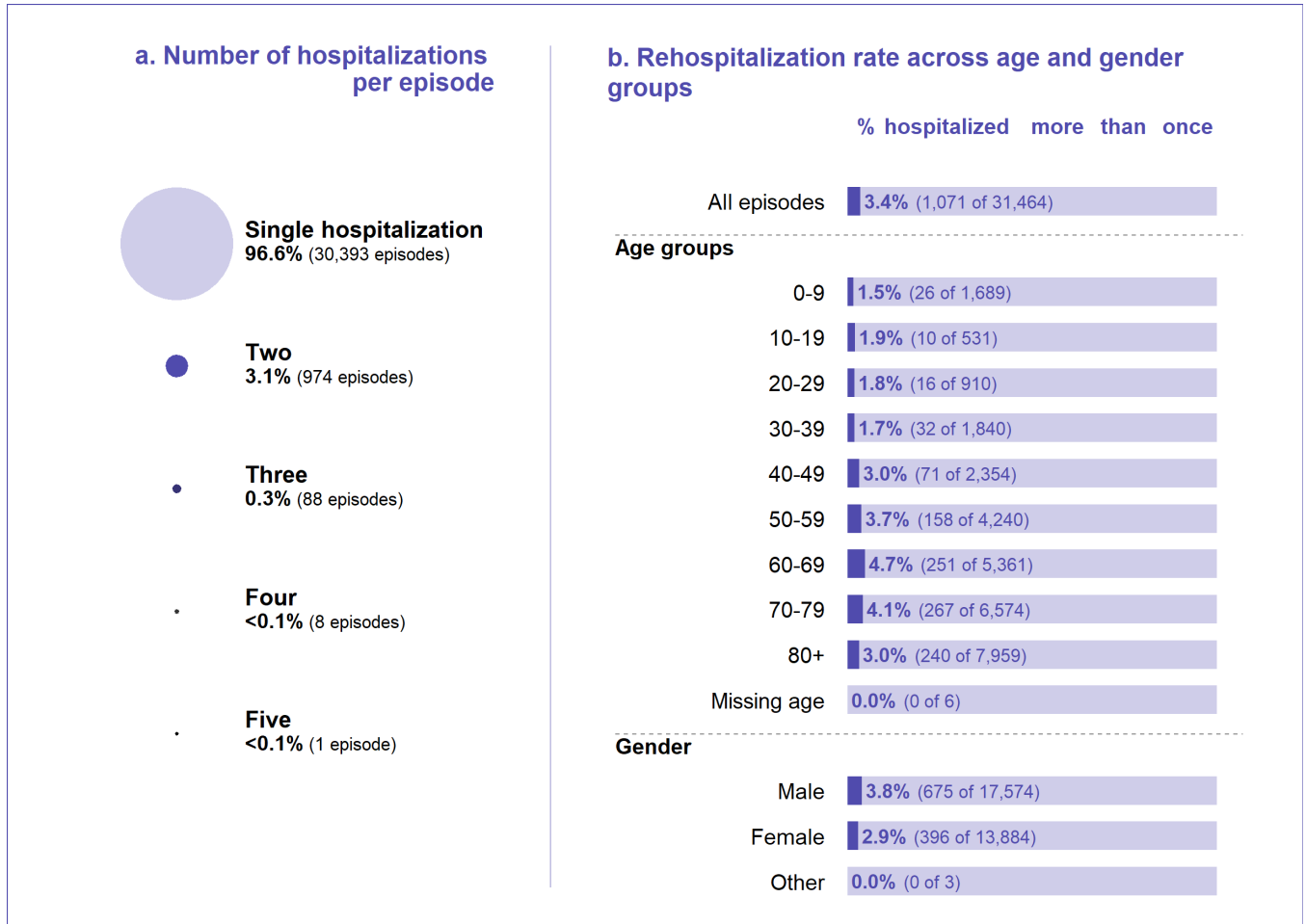


Figure 3: Hospitalizations per episode of hospitalization and rehospitalization rate across demographic groups. Includes records between March 2020 and September 26, 2022.

Most patients (96.6% [30,393 of 31,464]) were hospitalized only once during an episode, while 3% of the registered episodes (1,070 of 31,464) included two to four hospitalizations. Only one episode included five hospitalizations (Figure 3b).

The overall rate of rehospitalization within the same episode was 3.4% (1071 of 31,464) (Figure 3b). The 60-69 age group and the 70-79 age group had the highest rate of rehospitalization at respectively 4.7% (251 of 5,361) and 4.1% (267 of 6,574). Men had a higher rehospitalization rate than women, 3.8% (675 of 17,574) vs 2.9% (396 of 13,884) respectively.

Among all episodes, the majority (55.9% [17,574 of 31,464]) of the episodes concerned male patients (Figure 4a), and the age distribution was skewed towards older persons (Figure 4b). The largest age category corresponded to patients aged 80 and above (25.0% [7,959]).

Figures 4c and 4d show the gender and age distribution ratio over time. Except for January and April 2022, more men than women were admitted in each month for the entire period of observation. The proportion of episodes concerning patients aged 50 and above was notably high between October 2020 and January 2021, with a peak in November 2020: 88.3% (2,823 of 3,197) of the episodes of patients admitted in this month concerned patients 50 years old and above (Figure 4d). This peak in older age admissions mirrors a similarly-timed peak in admission severity and case fatality ratios described later. An increase in the percentage of episodes of patients aged 50 and above was observed again from September 2021 to November 2021, reaching a local peak of 75.2% (840 of 1,117)

in November 2021. Over the month of July 2022, 81.3% (357 of 439) of episodes concerned patients aged 50 and above. Notably, in this last period, we are seeing an increase in the elderly population being admitted with 27.3% [120 of 439] of episodes pertaining to patients aged between 70 and 80 years old and 37.1% [402 of 1,083] of episodes pertaining to patients over 80 years old.

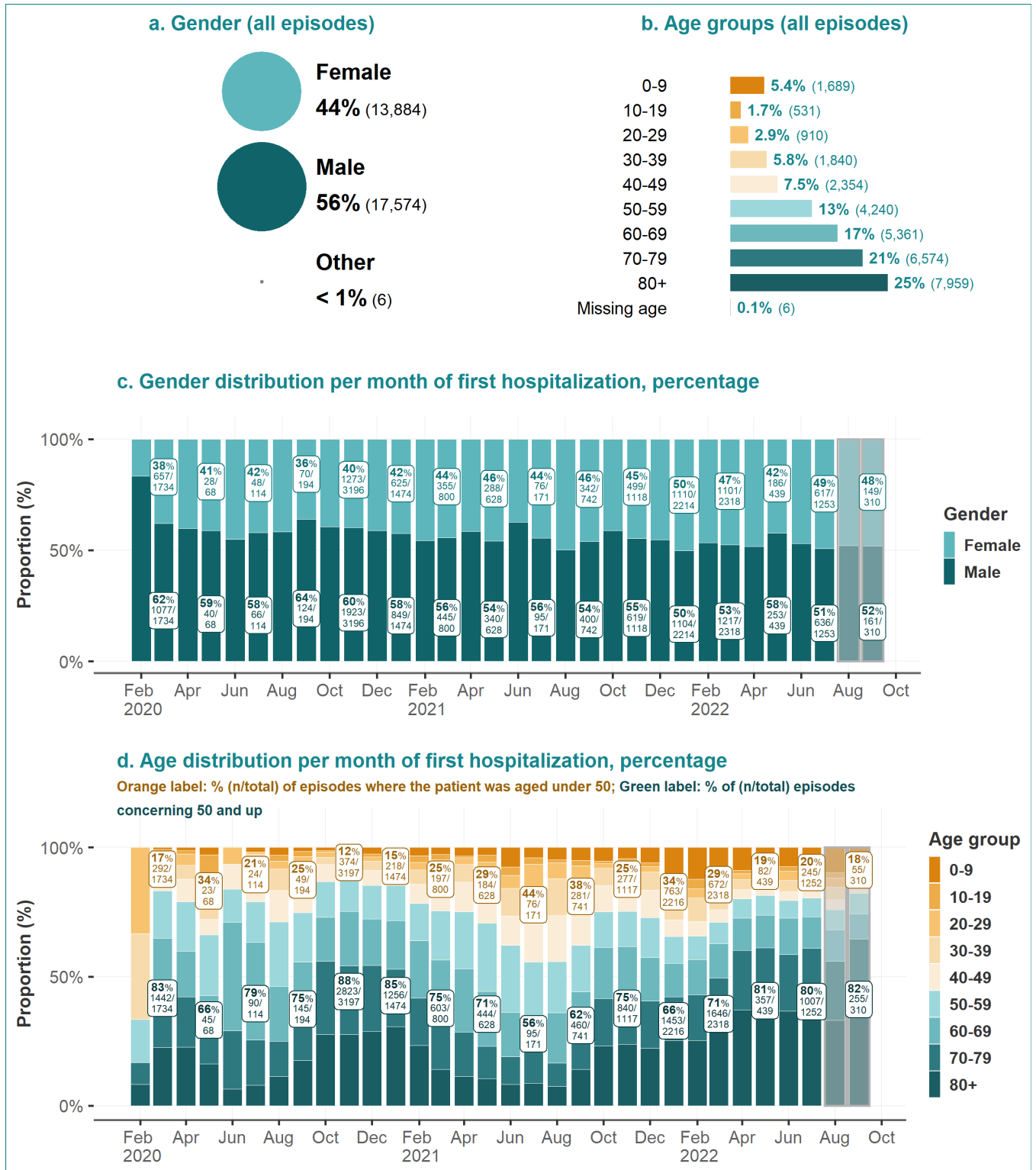


Figure 4: Demographic characteristics: gender and age distribution of admitted hospitalized patients, overall and per month. For episodes with multiple hospitalizations, the admission date of the first hospitalization was used. Data from the last two months (highlighted gray) is considered provisional due to entry delays. The 'other' gender category was removed from panel c, and the missing age group was removed from panel d.

3. Outcomes

3.1. Outcomes overview

Figure 5 shows the final outcomes of CH-SUR episodes over three time intervals. Episodes resulting in death, for which COVID-19 was the cause of death (died of COVID-19) are shown separately from those with a different cause of death (died with COVID-19, but not of COVID-19). A medical doctor at the hospital for each CH-SUR-participating center determined whether a patient died of COVID or another cause. Episodes where the cause of death was not certain, but there was a COVID-19 diagnosis (in conformity for complete inclusion criteria for CH-SUR) were counted as died of COVID or suspected death of COVID. The outcome “discharged” includes patients who were transferred out of the CH-SUR system. Episodes with “pending or missing outcomes” correspond to either patients who were still hospitalized or whose outcomes were not yet recorded in the database at the date of data extraction. Because of the higher proportion of incomplete data during the most recent months, case fatality rates from these months should be interpreted with caution.

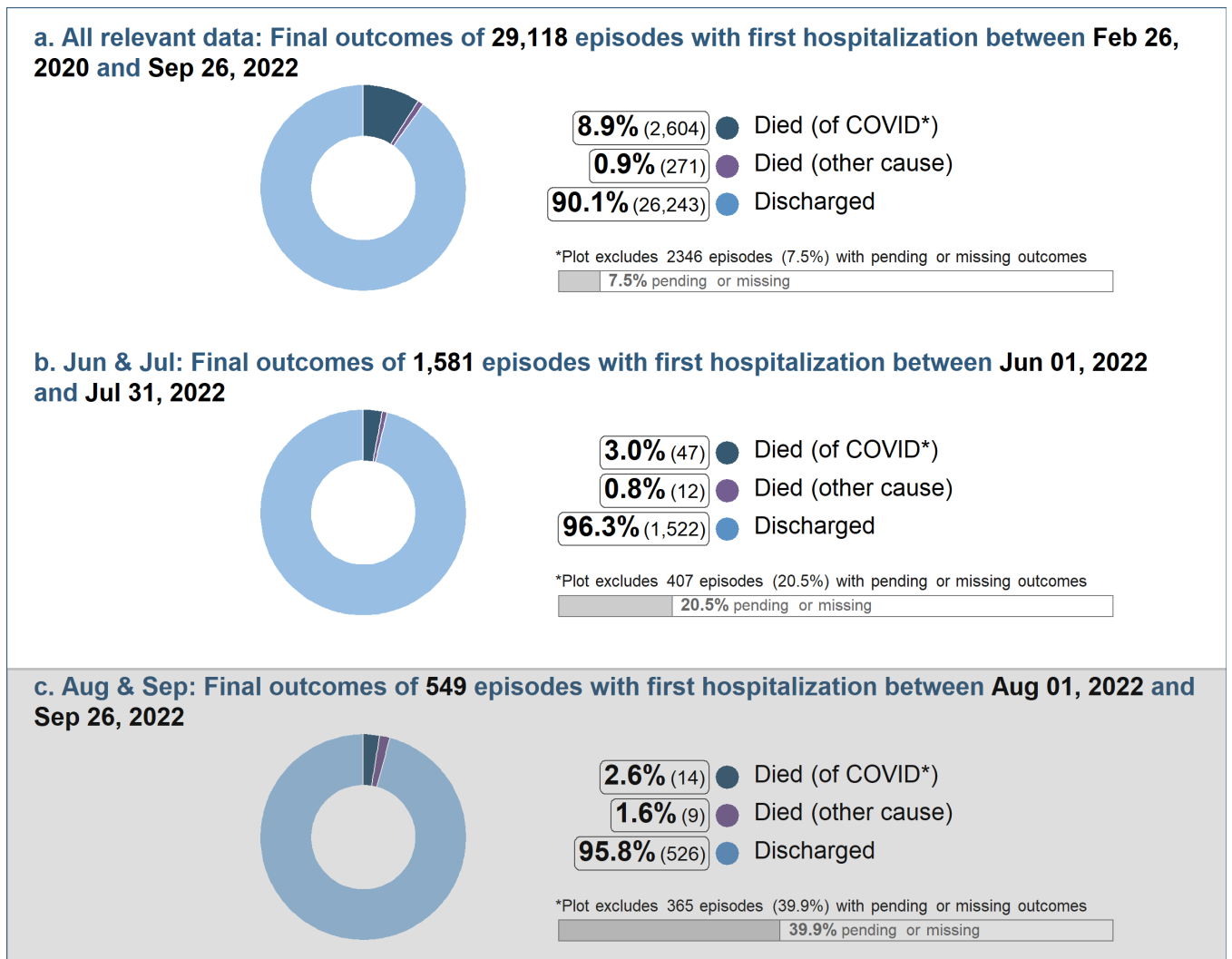


Figure 5: Outcomes for COVID-19 related episodes of hospitalization in CH-SUR hospitals. Includes records up to September 26, 2022. For episodes with multiple hospitalizations, only the final outcome is considered. Patients where the cause of death was not certain, but there was a COVID-19 diagnosis (in conformity for complete inclusion criteria for CH SUR) were counted as Died of COVID or suspected death of COVID. Data from the last two months (highlighted gray) is considered provisional due to entry delays. (* Died of COVID as a confirmed or suspected cause of death)

3.2. Outcomes over time

Figure 6 shows the final outcomes of **episodes** over time (Figure 6a & 6b) and the disease severity score at admission as a function of time (Figure 6c).

The first mortality peak is seen for patients admitted around the beginning of the epidemic: 15.1% (262 of 1,732) of episodes of patients first admitted in March 2020 resulted in death. Mortality decreased after March 2020, but rose again between October 2020 and January 2021, with a peak in December 2020: 13.9% (330 of 2,374) of episodes of patients first admitted in December 2020 resulted in death. An additional local peak of mortality was observed during the month October 2021, when 12.2% (53 of 433) of episodes resulted in death of COVID-19.

The high case fatality rates of patients with episodes of hospitalization in March 2020, between October 2020 and January 2021 and during October 2021, are mirrored by the higher admission **severity scores** (Figure 6c) and older patients' ages (Figure 4c) during these periods. Overall, in 31.7% (550 of 1,734) of the episodes with admission date in March 2020, the severity score was above 2. Over the months of October 2020 to January 2021, the proportion of episodes with severity scores of 2 and above was higher as over the rest of the epidemic, representing more than 40% (958 of 2,394) of the admissions in that period. Most recently, during May 2022, 33% (145 of 439) of the episodes had a severity score above 2, but this is not mirrored by higher case fatality rates (Figure 5)

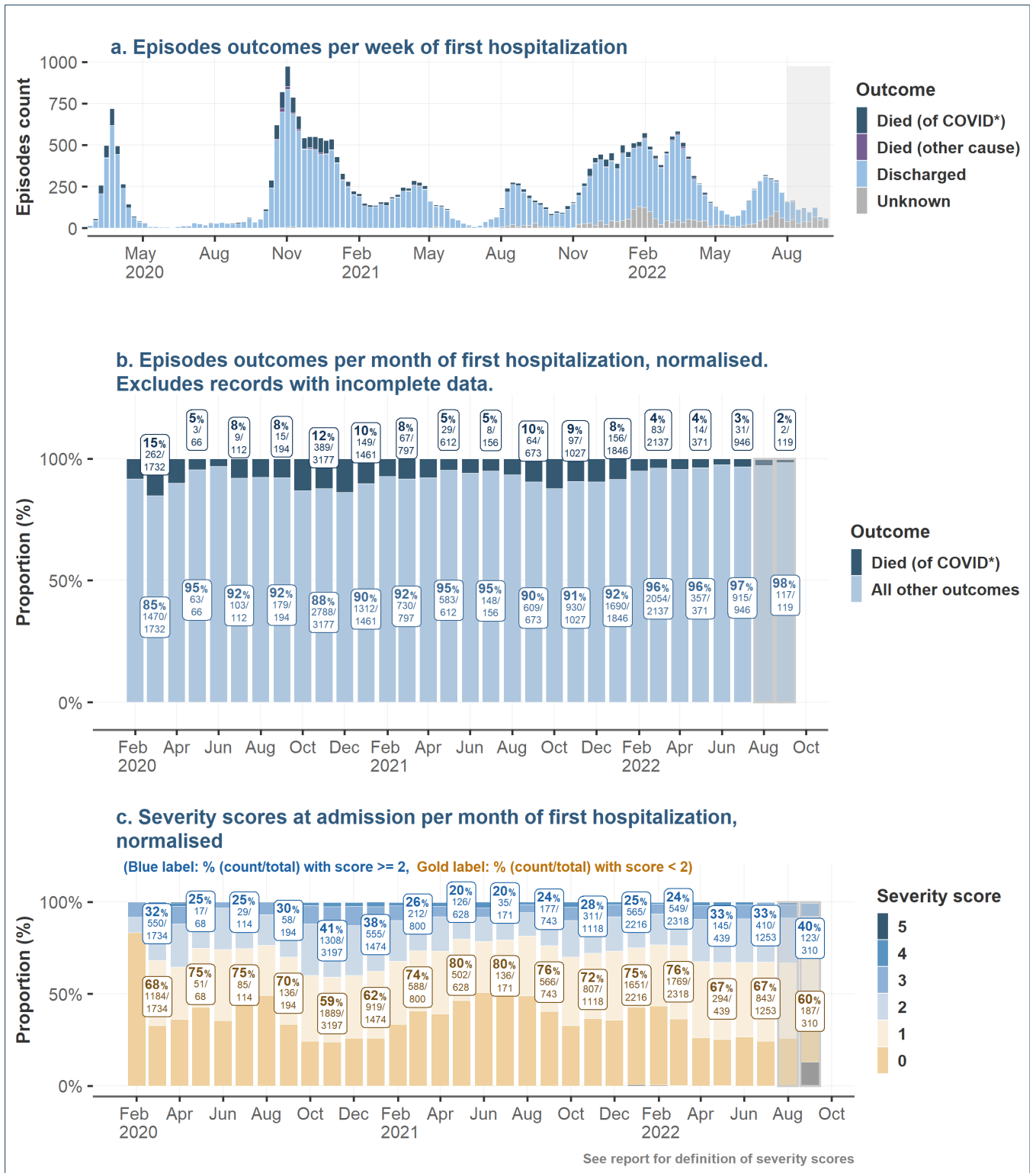


Figure 6: Epidemic curve, episodes' outcomes and severity scores at admission for COVID-19 hospitalizations over time. Includes records up to September 26, 2022. Data from the two last months (highlighted in gray) are considered provisional due to data entry delays. Episodes where the cause of death was not certain, but there was a COVID 19 diagnosis (in conformity for complete inclusion criteria for CH SUR) were counted as Died of COVID or suspected death of COVID. (* Died of COVID as a confirmed or suspected cause of death)

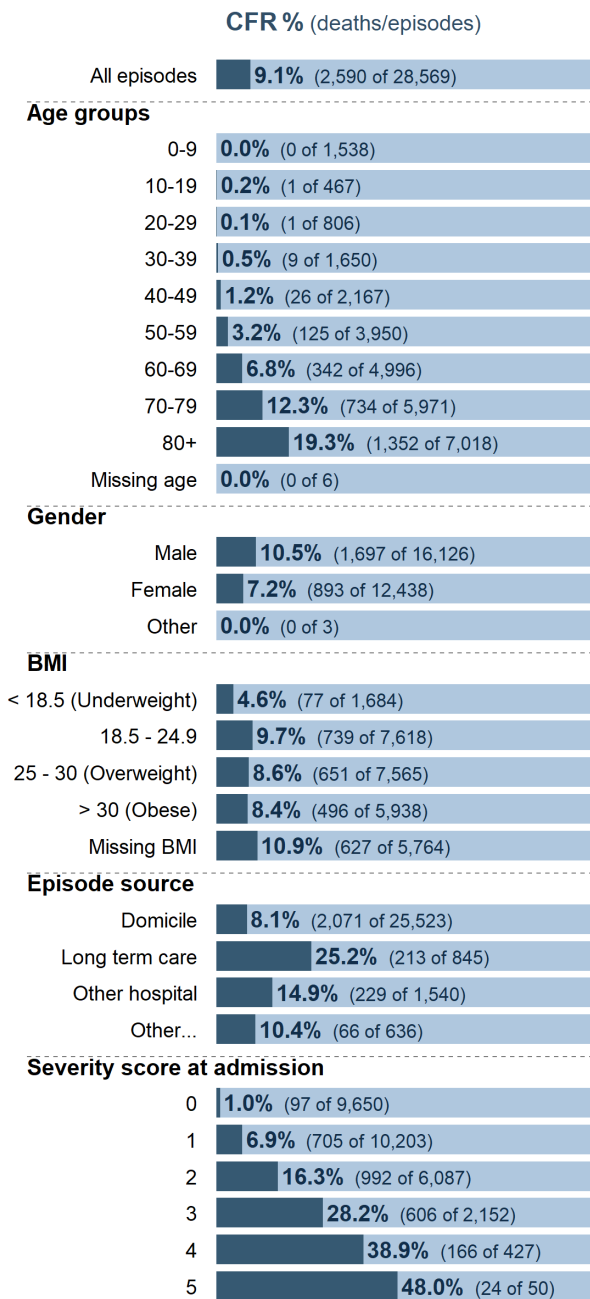
3.3. Case fatality rate (CFR) across demographic and risk groups

Since the beginning of the epidemic and until July 31, 2022, the case fatality rate (CFR) increased with increasing age, from 0% (0 of 1,538) in episodes of patients aged 0-9, to 3.2% (125 of 3,950) in episodes of patients aged 50-59, and to 19.3% (1,352 of 7,018) in episodes of patients aged 80+. CFR% was greater in men than in women: 10.5% (1,697 of 16,126) vs 7.2% (893 of 12,438) respectively. In addition, the CFR% was greater for episodes with higher severity scores at admission: 1% (97 of 9,650) of the episodes with severity score 0 resulted in death of COVID-19, while 48% (24 of 50) of the episodes with severity score 5 resulted in death of COVID-19 (Figure 7a).

The overall CFR% of the most recent period for which enough data is available (months June and July 2022, Figure 7b) was lower than the CFR% of the whole epidemic period (3.0% vs. 9.1%). The CFR% of the age groups 70-79 and 80+ were also lower than over the whole epidemic (Figure 7).

Of note, there was no clear mortality difference across different BMI groups. Data regarding vaccination status can be found in section 4.

a. All data: CFR % for 28,569 episodes with first hospitalization between Feb 26 2020 and Jul 31 2022



b. June & July: CFR % for 1,581 episodes with first hospitalization between Jun 01 2022 and Jul 31 2022

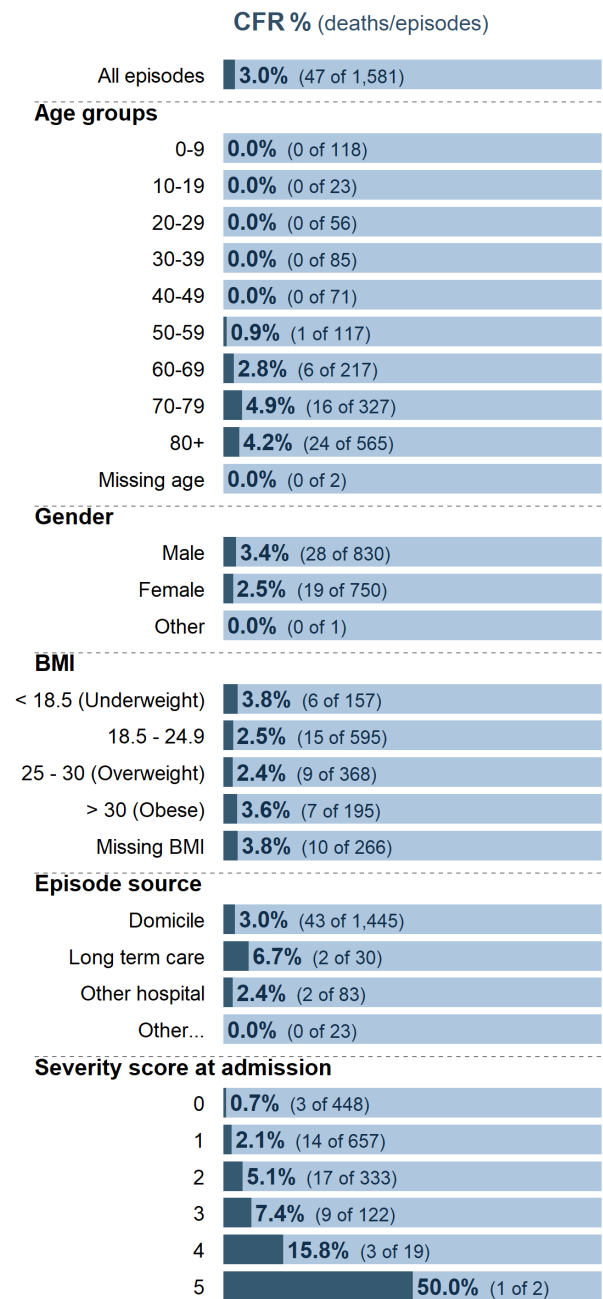


Figure 7: Case fatality rate (CFR) % among demographic and risk groups: percentage of hospitalization episodes in different demographic groups, which ended in the death of the patient of COVID-19 in hospital. Both figures include records up to Jul 31 2022 but records with incomplete data (ongoing hospitalization episodes or with a pending outcome in the database) were not included. Blank rows indicate a count of zero.

4. Immune/vaccination status

4.1. Immune status over time

For these analyses, the **immune status** of a patient considers the previous COVID-19 infections and the vaccine doses received up to the time of a positive COVID-19 test, specifically up to the time when the sample for the test was collected.

The proportion of **fully immunized** patients rose gradually after January 2021 (Figure 8b). This is expected, given the rise in the proportion of the fully vaccinated Swiss population (Figure 8c, source: [FOPH Dashboard](#)).

During the months of July 2022, 70.4% of the Swiss population was fully vaccinated (Figure 8c). It is important to note that we can know the percentage of the population which is vaccinated (through administrative records), but only approximate the proportion of the population which is immunized. Recent studies from [Corona Immunitas](#) are indicating that **the population immunization (by vaccination and/or previous infection) is nearing the 100%**. The higher percentage of base immunized and fully immunized of recent months (23.3% and 47.1% respectively) within the episodes recorded in CH-SUR (Figure 8b), may therefore be partly linked to the decreasing number of non-immunized persons in the population.

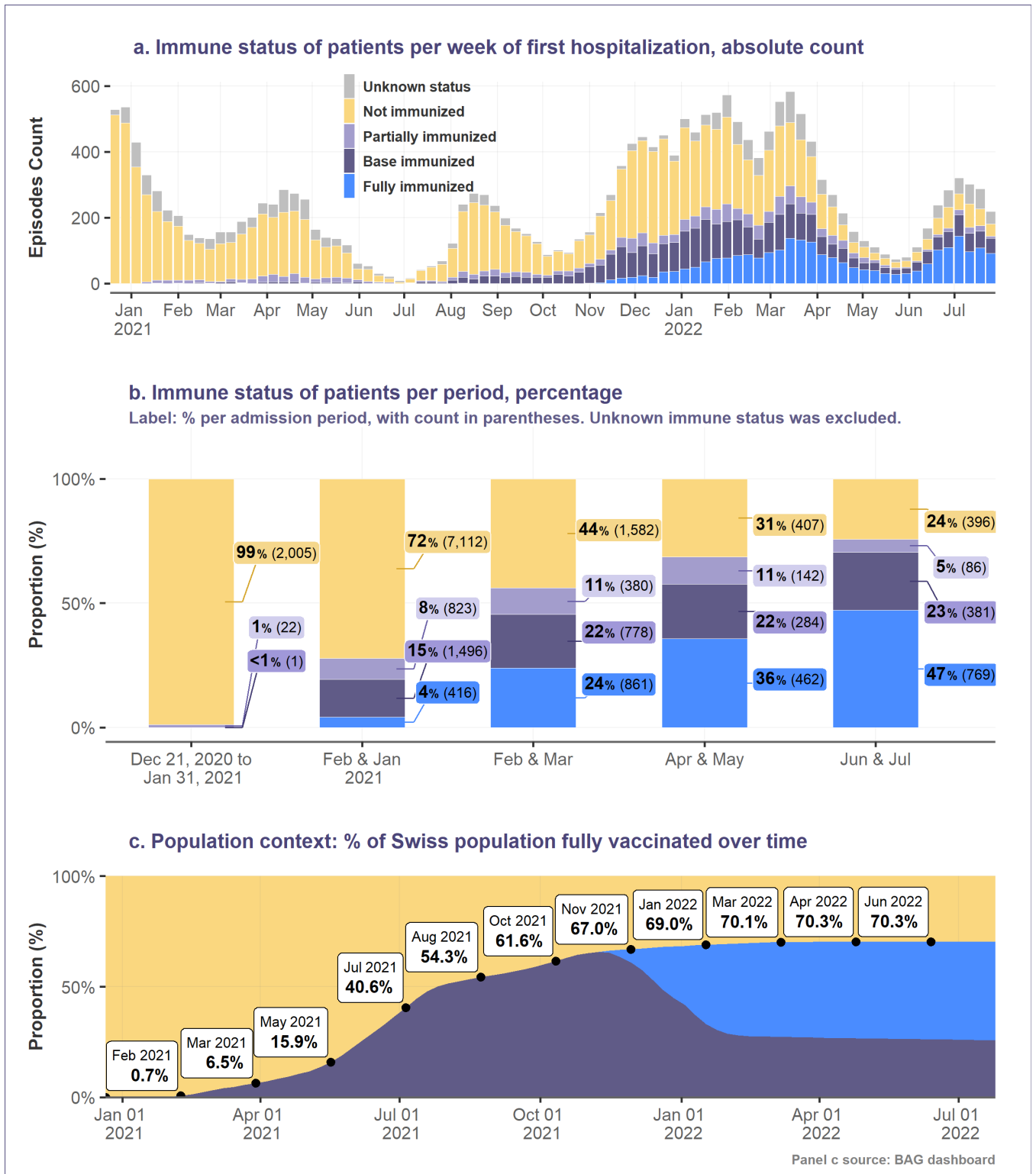


Figure 8: Immune status of patients and overall vaccination rate in Switzerland (exported: September 26, 2022). See glossary for definitions of immune status categories. For episodes with multiple hospitalizations, the immune status for the first hospitalization was considered. Panels a. and b. include episodes since the week vaccination began, Dec 21, 2020. (Vaccination began on Dec 23, 2020, but we include Dec 22 and 21 to cover a full week.) Episodes with first admission date after Jul 31, 2022 were excluded, as a large proportion of these records have not been completely filled in the database.

4.2. Demographic characteristics by immune status

Fully immunized hospitalized patients were disproportionately older. Since vaccination initiation, 48% of the episodes of fully immunized patients corresponded to patients aged 80 and above (Figure 9a, right panels). In contrast, only 18% (2,047 of 11,334) of the episodes of non-immunized patients corresponded to patients aged 80 and above (Figure 9a, left panel).

However, in more recent data, we see an augmentation in the proportion of older (aged 80+) as well as younger patients (0 to 9 years old) among the non-immunized episodes. From April 2022 to May 2022, among the episodes of non-immunized patients aged 0 to 9 years old, 28% (112 of 407) concerned patients aged 0 to 9 years old and 31% (128 of 407) concerned patients aged 80 and above. In the most recent data, from June 2022 to July 2022, 30% (117 of 396) of non-immunized episodes involved patients aged 0 to 9 years and 27% (107 of 396) involved patients aged 80 years and above.

Unknown status Not immunized Partially immunized Base immunized Fully immunized

a. All relevant data: immune status of 20,793 episodes with first hospitalization between Dec 23, 2020 and Jul 31, 2022



Not immunized:

Gender & age distribution among 11,334 episodes

Gender	
Male	53% (6,047)
Female	47% (5,287)
Age	
0-9	12% (1,395)
10-19	2.3% (263)
20-29	3.2% (359)
30-39	7.2% (812)
40-49	9.1% (1,035)
50-59	15% (1,716)
60-69	17% (1,976)
70-79	15% (1,731)
80+	18% (2,047)

Partially immunized:

Gender & age distribution among 1,453 episodes

Gender	
Male	52% (757)
Female	48% (696)
Age	
0-9	2.4% (35)
10-19	2.8% (40)
20-29	3.2% (47)
30-39	6.3% (91)
40-49	7.4% (108)
50-59	9.5% (138)
60-69	19% (272)
70-79	22% (324)
80+	27% (398)

Base immunized:

Gender & age distribution among 2,941 episodes

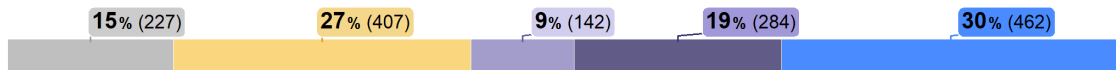
Gender	
Male	56% (1,633)
Female	44% (1,308)
Age	
0-9	0.0% (0)
10-19	0.8% (24)
20-29	2.8% (81)
30-39	5.9% (173)
40-49	6.0% (175)
50-59	10% (307)
60-69	17% (494)
70-79	25% (731)
80+	33% (956)

Fully immunized:

Gender & age distribution among 2,508 episodes

Gender	
Male	58% (1,464)
Female	42% (1,044)
Age	
0-9	0.1% (1)
10-19	0.1% (3)
20-29	1.2% (31)
30-39	3.2% (81)
40-49	3.5% (89)
50-59	6.7% (168)
60-69	11% (281)
70-79	26% (662)
80+	48% (1,192)

b. Apr & May: immune status of 1,522 episodes with first hospitalization between Apr 01, 2022 and May 31, 2022



Not immunized:

Gender & age distribution among 407 episodes

Gender	
Male	49% (199)
Female	51% (208)
Age	
0-9	28% (112)
10-19	2.5% (10)
20-29	1.7% (7)
30-39	3.9% (16)
40-49	2.5% (10)
50-59	6.1% (25)
60-69	9.3% (38)
70-79	15% (61)
80+	31% (128)

Partially immunized:

Gender & age distribution among 142 episodes

Gender	
Male	50% (71)
Female	50% (71)
Age	
0-9	4.2% (6)
10-19	4.9% (7)
20-29	4.9% (7)
30-39	7.0% (10)
40-49	2.8% (4)
50-59	9.2% (13)
60-69	13% (18)
70-79	23% (33)
80+	31% (44)

Base immunized:

Gender & age distribution among 284 episodes

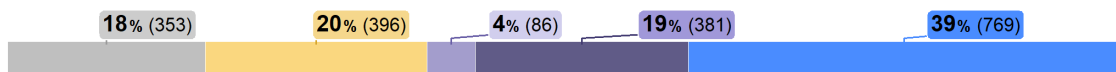
Gender	
Male	52% (147)
Female	48% (137)
Age	
0-9	0.0% (0)
10-19	0.0% (0)
20-29	2.5% (7)
30-39	4.2% (12)
40-49	3.5% (10)
50-59	11% (31)
60-69	19% (54)
70-79	30% (84)
80+	30% (86)

Fully immunized:

Gender & age distribution among 462 episodes

Gender	
Male	58% (268)
Female	42% (194)
Age	
0-9	0.0% (0)
10-19	0.0% (0)
20-29	0.9% (4)
30-39	1.7% (8)
40-49	3.7% (17)
50-59	5.8% (27)
60-69	10% (47)
70-79	30% (137)
80+	48% (222)

c. Jun & Jul: immune status of 1,985 episodes with first hospitalization between Jun 01, 2022 and Jul 31, 2022



Not immunized:

Gender & age distribution among 396 episodes

Gender	
Male	46% (184)
Female	54% (212)
Age	
0-9	30% (117)
10-19	1.0% (4)
20-29	3.5% (14)
30-39	5.1% (20)
40-49	2.3% (9)
50-59	6.3% (25)
60-69	11% (44)
70-79	14% (56)
80+	27% (107)

Partially immunized:

Gender & age distribution among 86 episodes

Gender	
Male	38% (33)
Female	62% (53)
Age	
0-9	3.5% (3)
10-19	4.7% (4)
20-29	3.5% (3)
30-39	8.1% (7)
40-49	12% (10)
50-59	9.3% (8)
60-69	12% (10)
70-79	12% (10)
80+	36% (31)

Base immunized:

Gender & age distribution among 381 episodes

Gender	
Male	51% (196)
Female	49% (185)
Age	
0-9	0.0% (0)
10-19	0.0% (0)
20-29	5.0% (19)
30-39	5.0% (19)
40-49	6.3% (24)
50-59	8.7% (33)
60-69	18% (69)
70-79	22% (84)
80+	35% (133)

Fully immunized:

Gender & age distribution among 769 episodes

Gender	
Male	56% (434)
Female	44% (335)
Age	
0-9	0.0% (0)
10-19	0.1% (1)
20-29	0.7% (5)
30-39	2.6% (20)
40-49	2.9% (22)
50-59	6.1% (47)
60-69	12% (90)
70-79	26% (203)
80+	50% (381)

Figure 9: Demographic characteristics of hospitalized patients by immune status, over three different periods. Some patients may be counted more than once, as a single patient can have several episodes. Episodes with first admission date after Jul 31 2022 were excluded, as a large proportion of these records have not been completely filled in the database. Episodes with missing ages or gender are not included in the analysis.

4.3. Outcomes by immune status

Since the date vaccinations began, December 23, 2020, among the 2,064 episodes of fully immunized patients, CH SUR registered 89 deaths because of COVID-19 (Figure 10a, right panels: fully immunized). 59 of them corresponded to patients aged 80 years old and above. Over the same period, 817 episodes ended in COVID-caused deaths among non-immunized patients (Figure 10a, left panel).

During the months of June and July, CH-SUR registered 36 deaths due to COVID-19 of which the immune status was known. Of these, 15 (41.7%) happened among non-immunized patients, 2 deaths (5.6%) among partially immunized patients, 6 deaths (16.7%) among base immunized patients, and 13 deaths (36.1%) among fully immunized patients (Figure 10). This may be linked to the increasingly low number of non-immunized patients in the population (see section 4.1.)

However, the CFR values by age show that the risk of death for the limited number of people who are hospitalized despite full vaccination is lower than that of unvaccinated hospitalized people across all age groups. This is specifically true for episodes concerning patients aged over 80 (21.1% CFR for non-immunized episodes compared to 6.1% for fully immunized episodes) (Figure 10c, left and right panel). This reflects the protective effect of vaccination on the risk of death.

a. All relevant data: 1,202 deaths among 16,427 episodes with first hospitalization between Dec 23, 2020 and Jul 31, 2022

Not immunized:
Age distribution of 817 deaths
in 10,527 episodes

Age	Cases	Deaths	CFR %
0-9	1321	0	0%
10-19	233	1	0.4%
20-29	322	1	0.3%
30-39	740	5	0.7%
40-49	962	13	1.4%
50-59	1608	53	3.3%
60-69	1861	136	7.3%
70-79	1609	214	13.3%
80+	1871	394	21.1%

Partially immunized:
Age distribution of 118 deaths
in 1,347 episodes

Age	Cases	Deaths	CFR %
0-9	35	0	0%
10-19	36	0	0%
20-29	41	0	0%
30-39	82	0	0%
40-49	95	0	0%
50-59	123	6	4.9%
60-69	258	22	8.5%
70-79	307	30	9.8%
80+	370	60	16.2%

Base immunized:
Age distribution of 178 deaths
in 2,489 episodes

Age	Cases	Deaths	CFR %
0-9	0	0	-
10-19	19	0	0%
20-29	61	0	0%
30-39	137	0	0%
40-49	148	2	1.4%
50-59	259	9	3.5%
60-69	430	21	4.9%
70-79	641	42	6.6%
80+	794	104	13.1%

Fully immunized:
Age distribution of 89 deaths
in 2,064 episodes

Age	Cases	Deaths	CFR %
0-9	1	0	0%
10-19	2	0	0%
20-29	30	0	0%
30-39	61	0	0%
40-49	73	0	0%
50-59	144	0	0%
60-69	238	4	1.7%
70-79	542	26	4.8%
80+	973	59	6.1%

b. Apr & May: 50 deaths among 1,070 episodes with first hospitalization between Apr 01, 2022 and May 31, 2022

Not immunized:
Age distribution of 24 deaths
in 339 episodes

Age	Cases	Deaths	CFR %
0-9	105	0	0%
10-19	5	0	0%
20-29	5	0	0%
30-39	12	0	0%
40-49	4	0	0%
50-59	21	0	0%
60-69	32	2	6.2%
70-79	55	4	7.3%
80+	100	18	18.0%

Partially immunized:
Age distribution of 0 deaths
in 123 episodes

Age	Cases	Deaths	CFR %
0-9	6	0	0%
10-19	5	0	0%
20-29	5	0	0%
30-39	8	0	0%
40-49	4	0	0%
50-59	12	0	0%
60-69	16	0	0%
70-79	32	0	0%
80+	35	0	0%

Base immunized:
Age distribution of 8 deaths
in 231 episodes

Age	Cases	Deaths	CFR %
0-9	0	0	-
10-19	0	0	-
20-29	4	0	0%
30-39	7	0	0%
40-49	9	0	0%
50-59	26	1	3.8%
60-69	46	2	4.3%
70-79	73	1	1.4%
80+	66	4	6.1%

Fully immunized:
Age distribution of 18 deaths
in 379 episodes

Age	Cases	Deaths	CFR %
0-9	0	0	-
10-19	0	0	-
20-29	4	0	0%
30-39	4	0	0%
40-49	13	0	0%
50-59	23	0	0%
60-69	43	0	0%
70-79	112	6	5.4%
80+	178	12	6.7%

c. Jun & Jul: 36 deaths among 1,254 episodes with first hospitalization between Jun 01, 2022 and Jul 31, 2022

Not immunized:
Age distribution of 15 deaths
in 332 episodes

Age	Cases	Deaths	CFR %
0-9	112	0	0%
10-19	4	0	0%
20-29	13	0	0%
30-39	15	0	0%
40-49	8	0	0%
50-59	22	0	0%
60-69	38	2	5.3%
70-79	40	3	7.5%
80+	80	10	12.5%

Partially immunized:
Age distribution of 2 deaths
in 66 episodes

Age	Cases	Deaths	CFR %
0-9	3	0	0%
10-19	4	0	0%
20-29	3	0	0%
30-39	5	0	0%
40-49	9	0	0%
50-59	6	0	0%
60-69	8	0	0%
70-79	5	1	20.0%
80+	23	1	4.3%

Base immunized:
Age distribution of 6 deaths
in 277 episodes

Age	Cases	Deaths	CFR %
0-9	0	0	-
10-19	0	0	-
20-29	14	0	0%
30-39	16	0	0%
40-49	20	0	0%
50-59	24	1	4.2%
60-69	56	2	3.6%
70-79	58	1	1.7%
80+	89	2	2.2%

Fully immunized:
Age distribution of 13 deaths
in 579 episodes

Age	Cases	Deaths	CFR %
0-9	0	0	-
10-19	0	0	-
20-29	5	0	0%
30-39	14	0	0%
40-49	19	0	0%
50-59	39	0	0%
60-69	75	1	1.3%
70-79	154	5	3.2%
80+	273	7	2.6%

Figure 10: Mortality of CH-SUR hospitalized patients by immune status, age group and hospitalization episode, over three different periods. The total counts of episodes in the subtitles include episodes with a final patient outcome known (discharged, died of any cause, or transferred out of CH-SUR), and where the patient's immune status was base immunized, fully immunized, partially immunized or not immunized. Episodes with missing age, missing gender, or missing were not included in the analysis. Counts of deaths only include episodes resulting in death because of COVID-19 (including those with COVID as suspected cause of death). Case-fatality rate (CFR), especially for the partially immunized and fully immunized categories, should be interpreted with caution due to small sample sizes.

5. Intensive care unit (ICU) admission

5.1. ICU admission over time

Figure 11 shows the proportion (in %) of ICU admission over time. The proportion of episodes with ICU admissions peaked between May and July 2020. Notably, this was during a period of low overall hospitalizations. In contrast, the lowest proportion was observed in most recent months since January 2022.

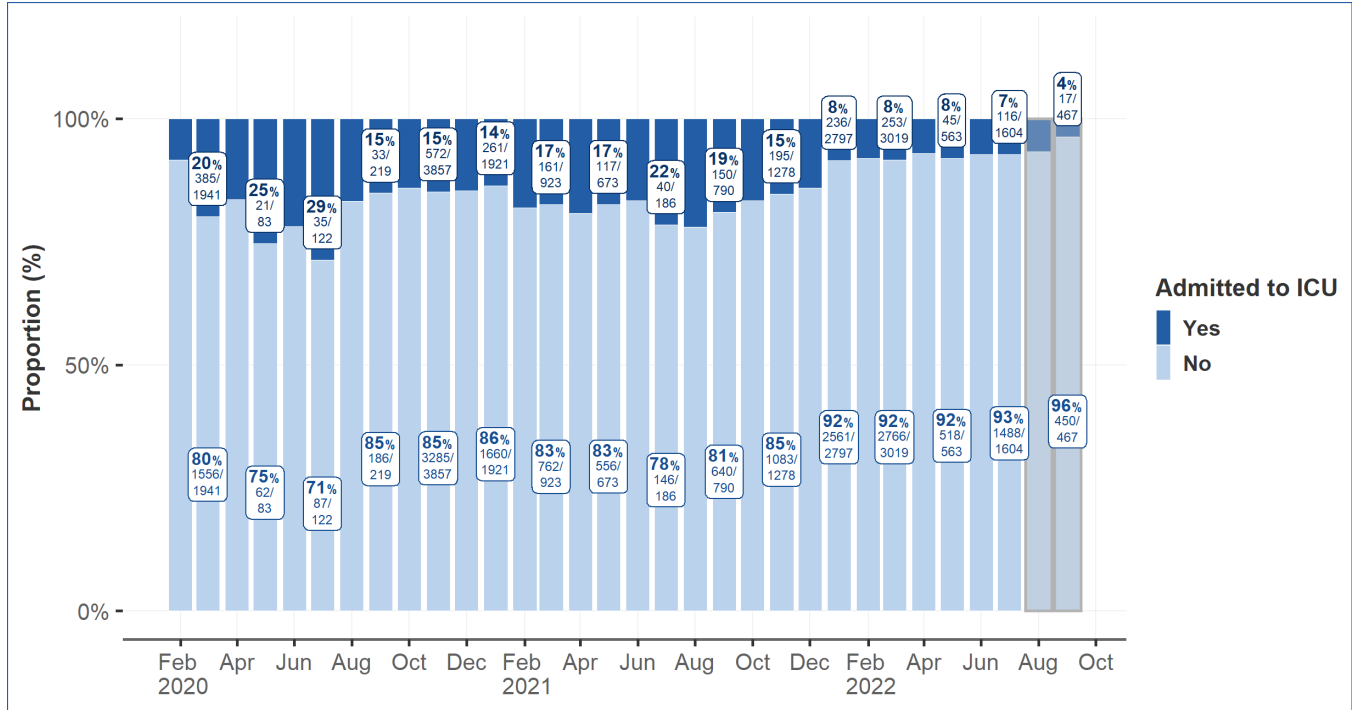


Figure 11: Percentage and proportion of episodes with at least one ICU admission over time. Records with incomplete data (ongoing episodes or with a pending outcome in the database) were not included. Data from the last two months (highlighted gray) are considered provisional due to data entry delays.

5.2. ICU admission across demographic and risk groups

Over the whole period of observation, ICU admission probability across ages was roughly bimodal with a peak for the 10-19-year age group and for the 60-69 age group (Figure 12a). The 60-69 age group had the highest probability of admission to the ICU, with 23.2% (1,220 of 5,258) of the episodes including at least one ICU admission. Notably, individuals aged 80 and above were least likely to be admitted to the ICU, with 5.1% (392 of 7,643) of the episodes including at least one ICU admission.

Males were more likely to be admitted to the ICU than females. Overall, admissions to the ICU were registered for 16.9% of the episodes concerning males, compared to 10.1% of the episodes concerning females.

Episodes of patients transferred from other hospitals had a high probability of ICU admission: 49.7% of such episodes (818 of 1,646) required at least one ICU admission (Figure 12a), compared to an overall admission rate of 16.2%.

ICU admission probability also increased slightly with increasing BMI and steeply with increasing admission **severity scores** (Figure 12a).

Figure 12b shows the ICU admissions for the most recent period with available data (June 2022 and July 2022). The distribution of ICU admissions across different population groups during the latest period was roughly similar to the frequencies observed for the whole observation period. Given the smaller sample size of this period of observation, larger oscillations in the percentages are expected, making the real trends difficult to identify. For the overall frequency of admission to ICU and all population groups observed, the frequency of admission to ICU was smaller for the months of June and July than for the full epidemic period (Figure 12).

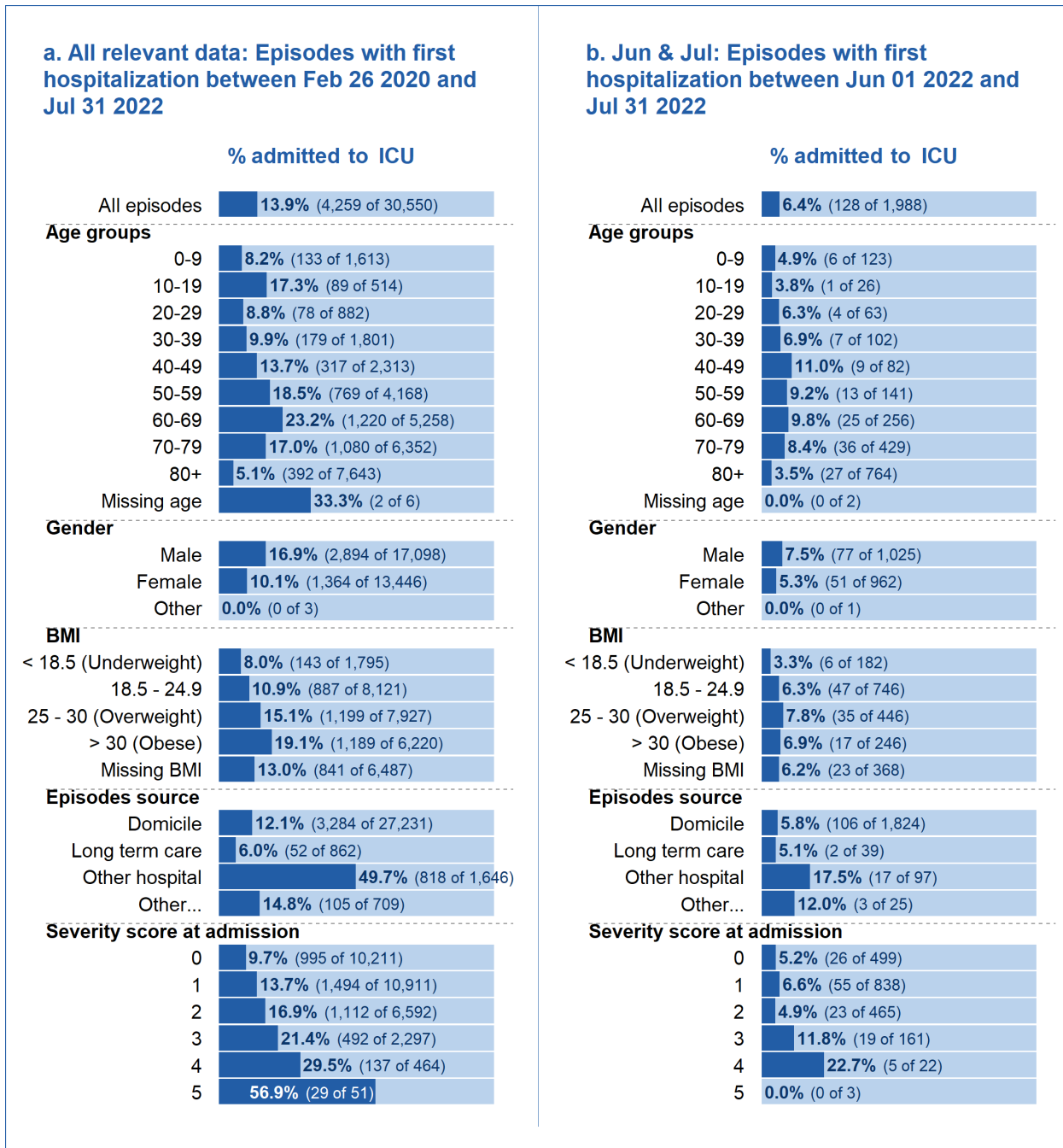


Figure 12: Percentage of hospitalization episodes with at least one ICU admission, grouped by demographic and risk factors, over two time intervals. For episodes with multiple hospitalizations, we considered whether they were admitted to the ICU during any of their hospitalizations. Both panels include records up to Jul 31, 2022 due to data completeness considerations. Records with incomplete data (ongoing episodes or with a pending outcome in the database) were not included. A blank row indicates a count of zero.

5.3. ICU admission rate by immune status

Figure 13 shows the ICU admission rate (number of episodes requiring an admission to the ICU over all episodes registered), stratified by age.

In recent data, from June and July, although episodes include 36.1% of people aged over 80 years old, these episodes did not have a high ICU rate (i.e. not many included an ICU stay).

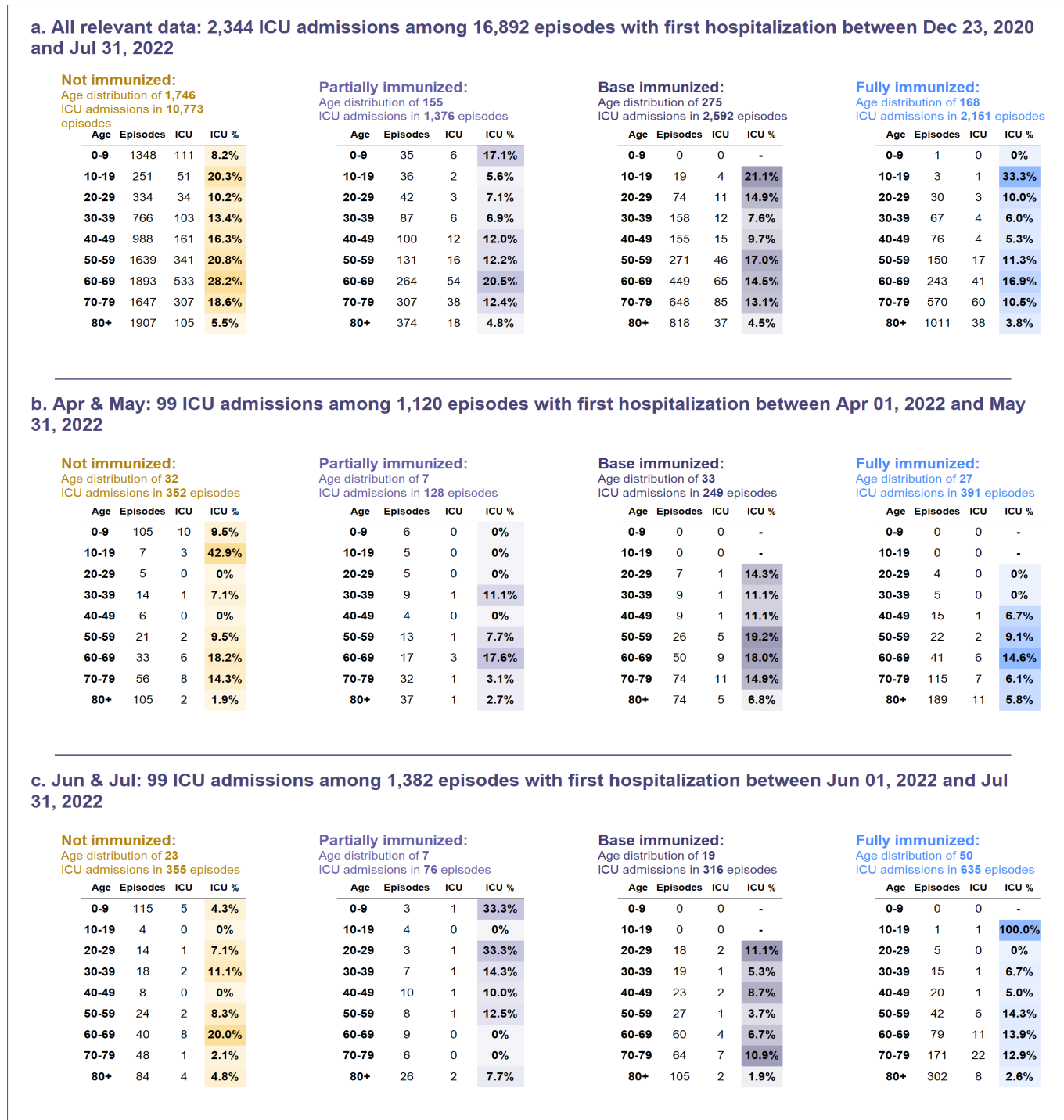


Figure 13: ICU admission over all episodes of CH-SUR hospitalized patients by immune status and age group over three different periods. Episodes with missing age, or missing ICU stay were not included in the analysis. ICU admission rates (ICU%), especially for the partially immunized and fully immunized categories, should be interpreted with caution due to small sample sizes.

5.4. ICU admissions contrasted by immune status

Due to a variance in vaccine coverage, only the recent evolution is represented. Data for August and September 2022 are not meaningful due to their incompleteness and are therefore not yet shown.

In both periods considered, the largest group of episodes with an ICU admission concerned non-immunized patients (28% and 18% of all episodes with ICU admissions in each of the described periods respectively). For most immune status categories shown and in both periods considered, there were more men than women admitted to the ICU (Figure 14).

For episodes of fully immunized patients, there is a skew towards older age groups being admitted to the ICU (between Apr 2022 and Jul 2022 around 95% of these episodes concerned patients aged 50+). In comparison, episodes of non-immunized patients admitted to the ICU included proportionally more patients from younger age groups, as only 56.4% (Apr, May) and 65% (Jun, Jul) of the episodes corresponded to patients aged 50 years and above.

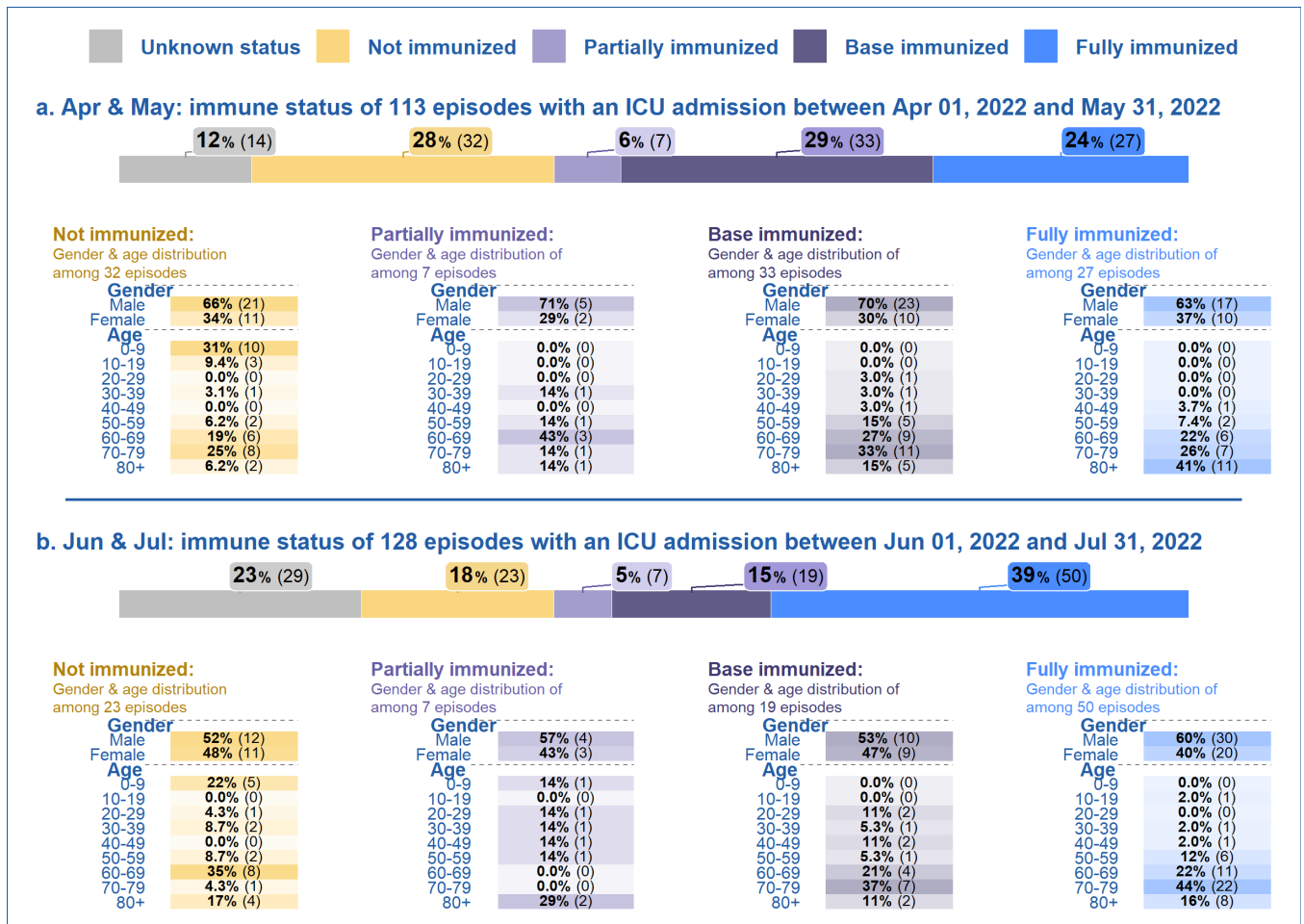


Figure 14: Demographic characteristics of patients in ICU by immune status and episode, over two different periods. Episodes with a first admission date after Jul 31, 2022 were excluded, as a large proportion of these records have not been completely filled in the database. Episodes with missing ages or gender marked as 'Other' are not shown. Data on ICU admissions for the partially immunized and fully immunized categories should be interpreted with caution due to small sample sizes.

6. Comorbidities

Chronic cardiovascular disease, hypertension, chronic renal disease, diabetes, chronic respiratory disease, and immunosuppression ¹ were chosen out of all comorbidities registered in CH-SUR ², to explore the risk factors tied to SARS-COV-2 hospitalization.

Most notably, episodes feature a predominance of males having a chronic cardiovascular disease comorbidity. Men and women both have a high incidence of hypertension as comorbidity (respectively 66.1% for men and 69.7% for women).

¹ Immunosuppression was defined as a patient having one or more of the following comorbidities: a hematological pathology with immuno-suppression, a rheumatological and auto-immune pathology with immuno-suppression, receiving a transplant (solid organs), and/or receiving an immuno-suppressive treatment.

² Chronic respiratory disease, Asthma, Diabetes, Hypertension, Chronic cardiovascular disease, Chronic renal disease, Chronic liver disease, Chronic neurological impairment, Hematological pathology with immuno-suppression, Oncological pathologies, Rheumatological and auto-immune pathology with immuno-suppression, Dementia, Transplant (solid organs), HIV-positive, Immuno-suppressive treatment, History of prematurity, Tuberculosis, Smoking, Obesity

Incidence of comorbidities stratified by gender and age group among episodes from Feb 2020 to Jul 2022

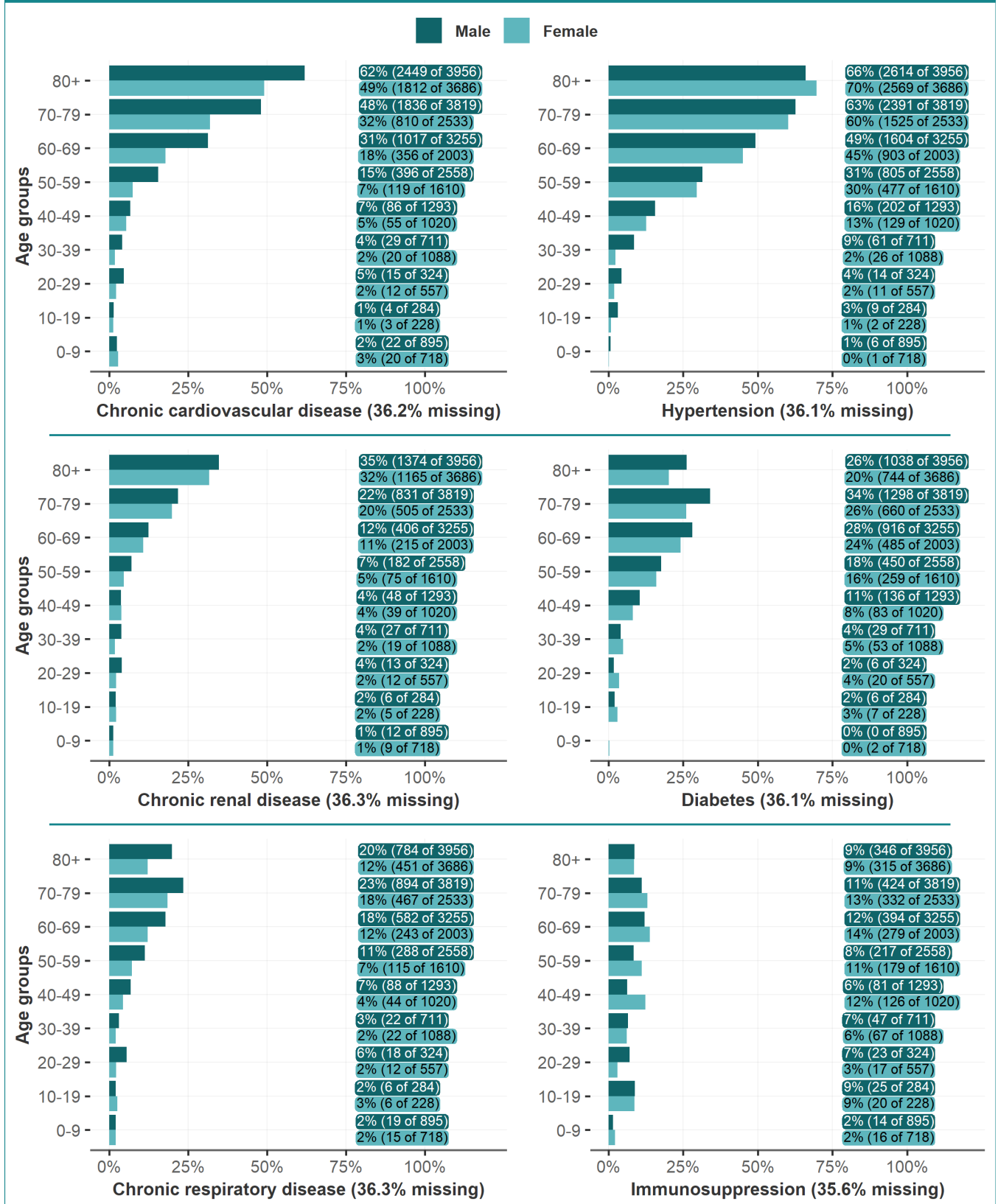


Figure 15: Comorbidities incidence stratified by age group and by gender. Records with incomplete data for age or gender were not included. Data from the last two months was excluded due to potential data delay.

7. Nosocomial cases

The proportion of **episodes** with nosocomial infections peaked in January 2021 and again in March and April 2022: 20% or more of the episodes in these periods were linked to infections of nosocomial origin (Figure 16c). In recent months, this proportion rose since August 2021, accounting for 13.7% of the episodes registered in CH-SUR over the month of December 2021, 19.0% in January 2022, 19.0% in March 2022, 20.4% in April 2022, and 29.9% in June 2022. This observation might be partially explained by periods of higher virus circulation and an increase in nosocomial systematic testing in some hospitals. However, changes in the testing strategy among hospitals are expected for the coming period, therefore, these data should be interpreted with caution.

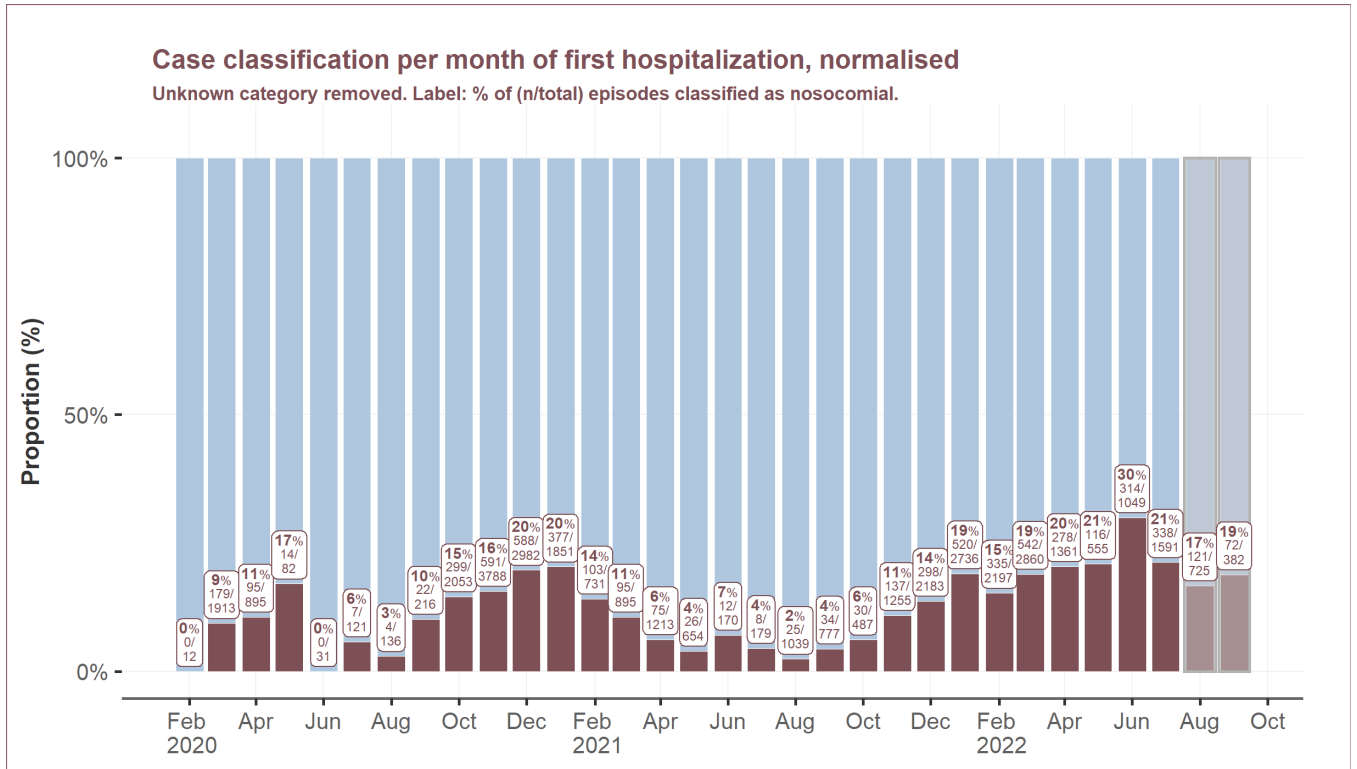


Figure 16: Classification (infection source) of hospitalization episodes over time. Data from the last two months (highlighted gray) are considered provisional due to data entry delays.

Over the full course of the epidemic, the **nosocomial** infections affected principally an elderly population, with patients aged 80 years and above, accounting for 2,674 (47%) of the nosocomial episodes. In comparison, 7,959 (25%) of episodes with **community-acquired** infections corresponded to patients aged 80 years and above.

Community acquired and nosocomial episodes from Feb 2020 to Sep 2022

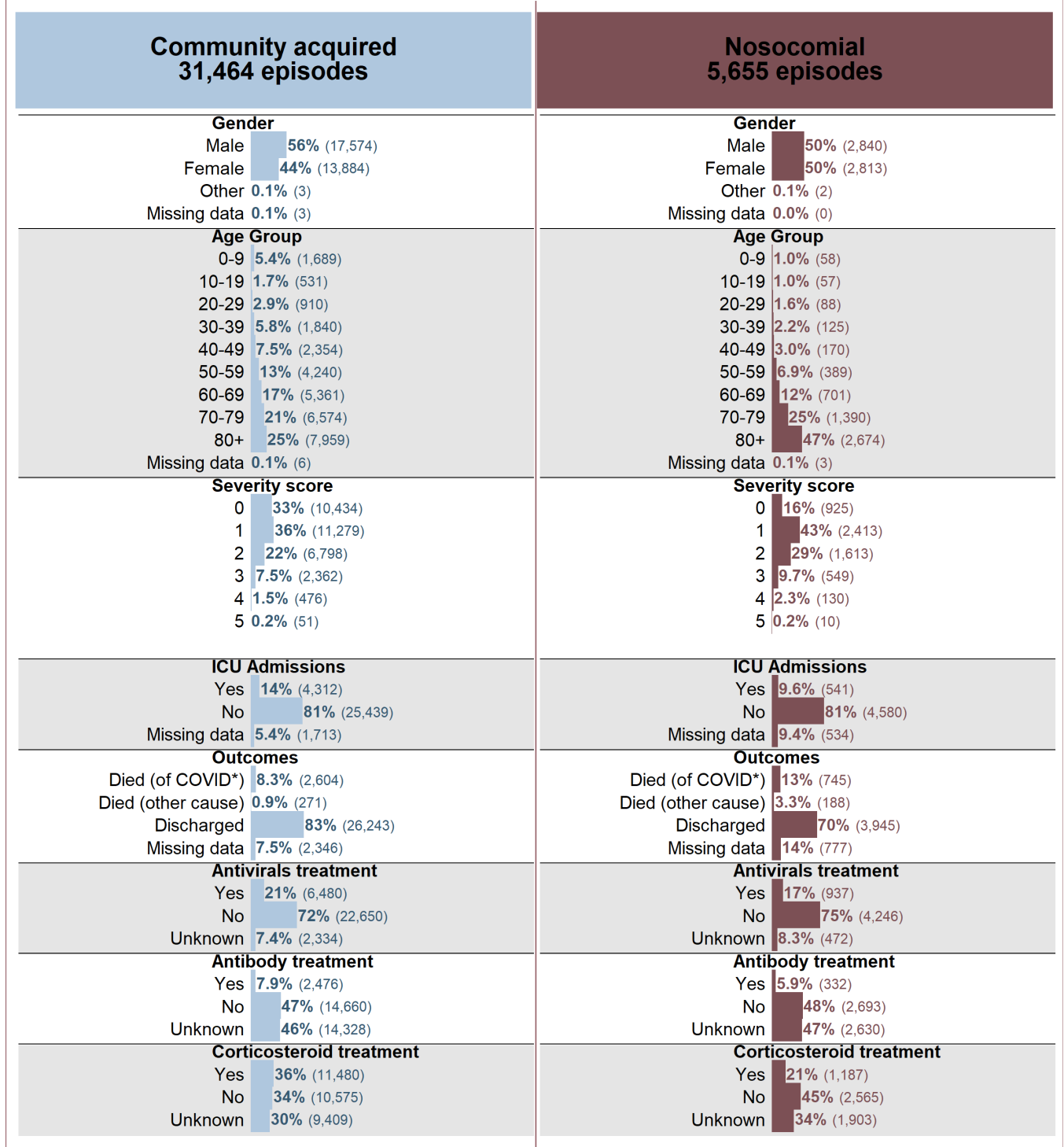


Figure 17: Comparison of community acquired and nosocomial cases by demographics, severity score, ICU, outcomes and treatments.

8. Glossar und ergänzende Informationen

Hospitalization / Hospitalisation:

Bei der Hospitalisation handelt es sich um die kleinste Datenanalyseeinheit. Sie ergibt sich aus jeweils einem Ein- und Austritt in einem an CH-SUR teilnehmenden Spital, wenn der Aufenthalt länger als 24 Stunden andauert. Jede Aufnahme einer Person in ein Spital wird als neue Hospitalisation gezählt. Da es innerhalb desselben Krankheitsverlaufs (einer einzelnen Infektion) häufig zu mehreren Hospitalisationen (Wiedereintritten) kommt, erfolgt die Analyse in diesem Bericht anhand der Anzahl Episoden und nicht anhand der Anzahl Hospitalisationen.

Episode / Episode:

Bei jeder Neuaufnahme in ein Spital, die mindestens 30 Tage nach einer früheren Hospitalisation erfolgt und zu einem Aufenthalt von mehr als 24 Stunden führt, wird eine Episodennummer vergeben. Wird eine Person innerhalb von 30 Tagen nur einmal oder mehrfach hospitalisiert, wird in beiden Fällen nur eine Episode gezählt. Wird eine Person im Abstand von über 30 Tagen zweimal hospitalisiert, werden zwei unterschiedliche Episodennummern vergeben. Wird eine Person innerhalb von 30 Tagen nach der letzten Entlassung zwischen zwei an CH-SUR teilnehmenden Spitälern transferiert, werden diese Hospitalisationen zur selben Episode gezählt. Eine Episode kann deshalb mehrere Hospitalisationen und jede Hospitalisation kann mehrere IPS-Aufnahmen umfassen.

Reason for the hospitalization / Hospitalisationsgrund:

- *Hospitalization because of COVID-19 / Hospitalisation aufgrund von COVID-19:* Basierend auf den bei der Aufnahme verfügbaren Informationen wird die Person hospitalisiert, weil sie Symptome aufgrund von COVID-19 aufweist oder an einer offensichtlich durch COVID-19 verursachten Dekompensation einer chronischen Krankheit leidet.
- *Hospitalization with a SARS-CoV-2 infection / Hospitalisation mit einer SARS-CoV-2-Infektion:* Basierend auf den bei der Aufnahme verfügbaren Informationen weist die Person einen positiven SARS-CoV-2-Test auf, wird aber ohne COVID-19-Symptome aus einem nicht mit COVID-19 zusammenhängenden Grund hospitalisiert. Das Hauptproblem ist also ein Unfall oder eine Erkrankung, die nicht mit COVID-19 in Verbindung steht.

Origin of the infection / Infektionsursprung:

- *Community acquired infection: / Ambulant erworbene Infektion:* Die SARS-CoV-2 Infektion wurde vor der Aufnahme in das Spital oder innerhalb der ersten fünf Tage nach der Aufnahme festgestellt.
- *Nosocomial infection / Nosokomiale Infektion:* Eine Episode gilt als «nosokomial», wenn die SARS-CoV-2 Infektion nach fünf oder mehr Tagen nach der Aufnahme in das Spital festgestellt wird.

Severity score at admission / Schweregrad bei der Aufnahme:

Bei Erwachsenen wird zur Beurteilung des Schweregrads der CURB-65 Score angewendet. Für jedes der folgenden Kriterien wird jeweils 1 Punkt gezählt: Verwirrtheit (Abbreviated Mental Test Score < 9), Serumharnstoff > 19 mg/dl, Atemfrequenz > 30 pro Minute, tiefer Blutdruck (diastolisch < 60 oder systolisch < 90 mmHg), Alter > 65 Jahre. Bei Kindern wird je ein Punkt für folgende Kriterien gezählt: Atemnot, Sauerstoffsättigung < 92%, Anzeichen schwerer klinischer Dehydratation oder eines klinischen Schocks und ein veränderter Bewusstseinszustand. Der Schweregrad entspricht der Summe der jeweiligen gezählten Punkte.

Intermediate care unit (intermediate care or IMC) / Intermediate Care Unit (IMC): Pflegestation für Personen, die an einer Störung einer lebenswichtigen Funktion leiden oder deren Pflegelast keine Rückkehr in eine Bettenstation erlaubt. Die Intermediate Care Unit bildet das Bindeglied zwischen Intensivpflegestation und Bettenstation.

Intensive care unit (ICU) / Intensivpflegestation (IPS): Pflegestation für Personen, die eine schwerwiegende Störung einer oder mehrerer lebenswichtiger Funktionen haben oder bei denen das Risiko schwerer Komplikationen besteht.

Immune status / Immunstatus:

Für die Definition des Immunstatus werden sowohl die Impfung als auch eine frühere bestätigte SARS-CoV-2-Infektion berücksichtigt. Der Immunstatus ist wie folgt definiert:

a) *Not immunized / Nicht immunisiert*: Personen, die zum Zeitpunkt des positiven SARS-CoV-2-Tests keine Dosis irgendeines Impfstoffs erhalten hatten und bei denen kein Nachweis einer Infektion mit dem Virus vor der Hospitalisationsepisode bestand.

b) *Partially immunized / Teilweise immunisiert*:

1. Personen, die vor dem positiven Test eine Impfstoffdosis Moderna (Spikevax®), Pfizer/BioNTech (Comirnaty®), AstraZeneca (Vaxzevria®), Sinopharm®, Sinovac (CoronaVac®) oder COVAXIN® erhalten hatten und bei denen kein Nachweis einer früheren SARS-CoV-2-Infektion bestand.
2. Personen, die mit keiner Dosis geimpft wurden und bei denen eine frühere SARS-CoV-2-Infektion bestätigt wurde, die in der Vergangenheit eine Hospitalisation erfordert hatte oder nicht; unabhängig von der Zeit seit der früheren Infektion. Achtung: Viele genesene Personen werden in der Datenbank nicht als solche identifiziert (erst seit Juni 2021 erhobene Information, nicht diagnostizierte Infektionen, fehlende Informationen im Dossier).

c) *Base immunized / Grundimmunisiert*:

1. Personen, die eine Dosis des Impfstoffs Johnson & Johnson (Janssen®) oder zwei Dosen des Impfstoffs Spikevax®, Comirnaty®, Vaxzevria®, Sinopharm®, CoronaVac® oder COVAXIN® erhalten hatten (Impfempfehlung BAG / Eidgenössische Kommission für Impffragen).
2. Personen mit einer dokumentierten früheren Infektion oder einem positiven Test (die einen Spitalaufenthalt erfordert hatten oder nicht), die eine Dosis eines der oben aufgeführten Impfstoffe erhalten hatten, unabhängig von der Zeit seit der Genesung, dem Datum und der Marke des Impfstoffs, und einem positiven Test oder einer Hospitalisation.
3. Personen, die eine Kombination folgender Impfstoffe erhalten hatten: Comirnaty® und Spikevax®, Vaxzevria® und Comirnaty® oder Vaxzevria® und Spikevax®. Personen, die eine zusätzliche Auffrischimpfung erhalten hatten, werden hier nicht berücksichtigt (Kategorie Fully immunized / Vollständig immunisiert).

d) *Fully immunized / Vollständig immunisiert*: Grundimmunisierte Personen, die eine oder mehrere weitere Impfdosen (Auffrischimpfung) erhalten hatten, unabhängig von der Zeit seit der letzten Impfung (mindestens 4 Monate nach der letzten Impfung).

e) *Unknown immune status / Unbekannter Immunstatus*: Personen, für die keine Informationen über Impfungen und zur Immunität vorlagen.

Discharge / Entlassung: Ein Spitalaustritt gilt als «Entlassung», wenn die Person das Spital mit einem der folgenden Zielorte verlässt: 1. nach Hause; 2. Langzeitpflegeeinrichtung; 3. anderes Spital; 4. andere Einrichtung, die sich nicht am CH-SUR-Überwachungssystem beteiligt; 5. Rehabilitationseinrichtung; 6. unbekannter Zielort

Reason of death / Todesursache: : Personen, bei denen COVID-19 die Todesursache war (died of COVID-19 / verstorben an COVID-19), werden getrennt aufgeführt von den COVID-19-Patientinnen und -Patienten, die wegen anderer Todesursachen verstarben (died with COVID-19, but not of COVID-19 / verstorben mit COVID-19, aber nicht an COVID-19). Ob eine Person an COVID-19 oder aus einem anderen Grund verstarb, wird auf Spitalebene im betreffenden am CH-SUR-System teilnehmenden Zentrum von einer Ärztin oder einem Arzt beurteilt. Fälle, in denen die Todesursache nicht sicher ist, aber eine COVID-19-Diagnose vorliegt (in Übereinstimmung mit den Einschlusskriterien für CH-SUR), werden als «verstorben an COVID-19» oder «vermuteter COVID-19-Todesfall» gezählt.

Dealing with missing data / Umgang mit fehlenden Daten: Wenn im Text erwähnt, werden fehlende Daten von der Analyse ausgeschlossen. Andernfalls werden Datensätze mit fehlenden Daten in der Gesamtanzahl berücksichtigt und entsprechend analysiert. Dies kann dazu führen, dass die Denominatoren der verschiedenen analysierten Kategorien nicht dieselbe Gesamtsumme ergeben. In einigen Abbildungen werden die Daten der letzten beiden Monate aufgrund von Verzögerungen bei der Datenerfassung als provisorisch betrachtet und grau markiert, wobei dies jeweils angegeben wird.

Report prepared by:

University of Geneva, Institute of Global Health (IGH): Vancauwenberghe, Laure; Nwosu, Kenechukwu; Thiabaud, Amaury; Suveges, Maria; Sobel, Jonathan; Botero Mesa, Sara; Keiser, Olivia

Infection Control Program, University of Geneva Hospitals (HUG): Zanella, Marie-Celine

Bundesamt für Gesundheit, Bern (BAG): Roder, Ursina; Resenterra-Charrière, Véronique; Fesser, Anna Vonlanthen, Jasmin;